

**SELECTBOARD MEETING
TUESDAY, NOV. 10, 2020
VIRTUAL AGENDA
7 P.M.**

Join Zoom Webinar from your computer:

<https://us02web.zoom.us/j/81617073881?pwd=Q3cyL3lXSks5DSGR6T2NHakMyMmtYZz09>

By phone: +13126266799 Webinar ID: 816 1707 3881 Passcode: 655186

Watch live on SHCTV Channel 15 or <https://shctv15.com/watch-live/>

<p>Note: Not all topics listed here may be reached for discussion. In addition, the topics listed are those which the chair reasonably expects will be discussed as of the date of this notice. This meeting may be audio and/or visually recorded.</p>
--

1. Call to Order
2. Approval of Minutes: Draft Minutes of Oct. 20, 2020
3. Open Forum/Announcement
4. COVID 19 Update (S Hart)
5. Acceptance of Construction Soil at Landfill (Kip Foley, Closure Management)
6. TA Search Update (Sub Committee Etelman, Geraghty)
7. Town Administrator's Report
8. Executive Session: AFSCME 93, Town Administrator Contract
9. Adjourn

**SELECTBOARD MEETING
TUESDAY, OCT. 20, 2020
DRAFT MEETING MINUTES
VIRTUAL MEETING ROOM – 6 P.M.**

Present were Chair Jeff Cyr, Vice Chair Sarah Etelman, Member Chris Geraghty, Member Bruce Forcier, and Town Administrator Michael J. Sullivan. Member Andrea Miles was absent.

CALL TO ORDER

Cyr called the meeting to order at 7 p.m.

APPROVAL OF MINUTES

Etelman motioned to approve the draft minutes of Sept. 8, 2020, Sept. 15, 2020, Sept. 22, 2020, and Oct. 6, 2020. Geraghty seconded. All in favor.

ROLL CALL VOTE

Etelman – Aye

Cyr – Aye

Forcier – Aye

Geraghty – Aye

COVID UPDATE

COVID-19 continues to infect South Hadley residents. There are five more positive cases since the previous week for a total of 221 confirmed cases, said Emergency Management Director Sharon Hart. There are 220 contact cases, nine probable cases and five suspect.

ELECTION UPDATE

Town Clerk Carlene Hamlin discussed the decision to separate precincts on Election Day to allow for better social distancing, cutting down on long lines, and providing separate entrances into the school. Precinct A and B will vote in the gym, Precinct C will vote in the cafeteria, Precinct D will vote in the Tiger's Den and Precinct E will vote in the school library.

Hamlin said there is a high volume of in-person early voting. This is taking place at the public library until Oct. 30. She said at this time there is a 58 percent voter turnout with early and mail-in voting.

LEDGES DISCUSSION

Mike Fontaine of IGM noted various storms have impacted the golf course over the summer, as has COVID. Rounds of golf have been up during the pandemic, in the thousands since July, he said. The driving range numbers are also higher. The restaurant is faring better than IGM thought it might. The restaurant will likely close in November and IGM will keep the course open as long as Mother Nature allows.

The revenue loss for the last fiscal year at the course was \$128,000. In talking to DOR, one option TOSH could implement is to spread that loss over three years. This would allow that enterprise fund to fund the loss rather than through general taxation.

The Selectboard will need to craft a Ledges rate recommendation for 2021. They will aim for a discussion about it at their first meeting in December.

FY21/22 BUDGET DISCUSSION

The FY22 budget is in the beginning stages, said Sullivan. He has taken an aggressive approach and asked department heads to craft budgets using 2019 numbers. Revenues continue to be steady right now. Building permits are strong, too. However, Sullivan doesn't feel TOSH is out of the woods yet. There are several capital items that need to be addressed, including a communication system serving the police, fire and DPW departments. Sullivan predicts the next few years ahead will be financially tight and TOSH will need to be cautious about funds.

NOVEMBER SELECTBOARD SCHEDULE

Due to the presidential election held on the first Tuesday of the month, the Selectboard will change their November meeting schedule to Nov. 10 and 24.

TA REPORT

It was noted the dog park sustained some minor damage in the most recent storm. For the full town administrator's report, see the Oct. 20, 2020 Selectboard Packet.

ADJOURN

Etelman motioned to adjourn. Geraghty seconded. All in favor.

ROLL CALL VOTE

Etelman – Aye

Cyr – Aye

Forcier – Aye

Geraghty – Aye

The meeting adjourned at 8:17 p.m.

RESPECTFULLY SUBMITTED
Kristin Maher
Executive Assistant to Administration

PROPOSAL

**REOPENING THE
SOUTH HADLEY LANDFILL
AS A DEDICATED
CONSTRUCTION SOILS
FACILITY**





Proposal

Outline

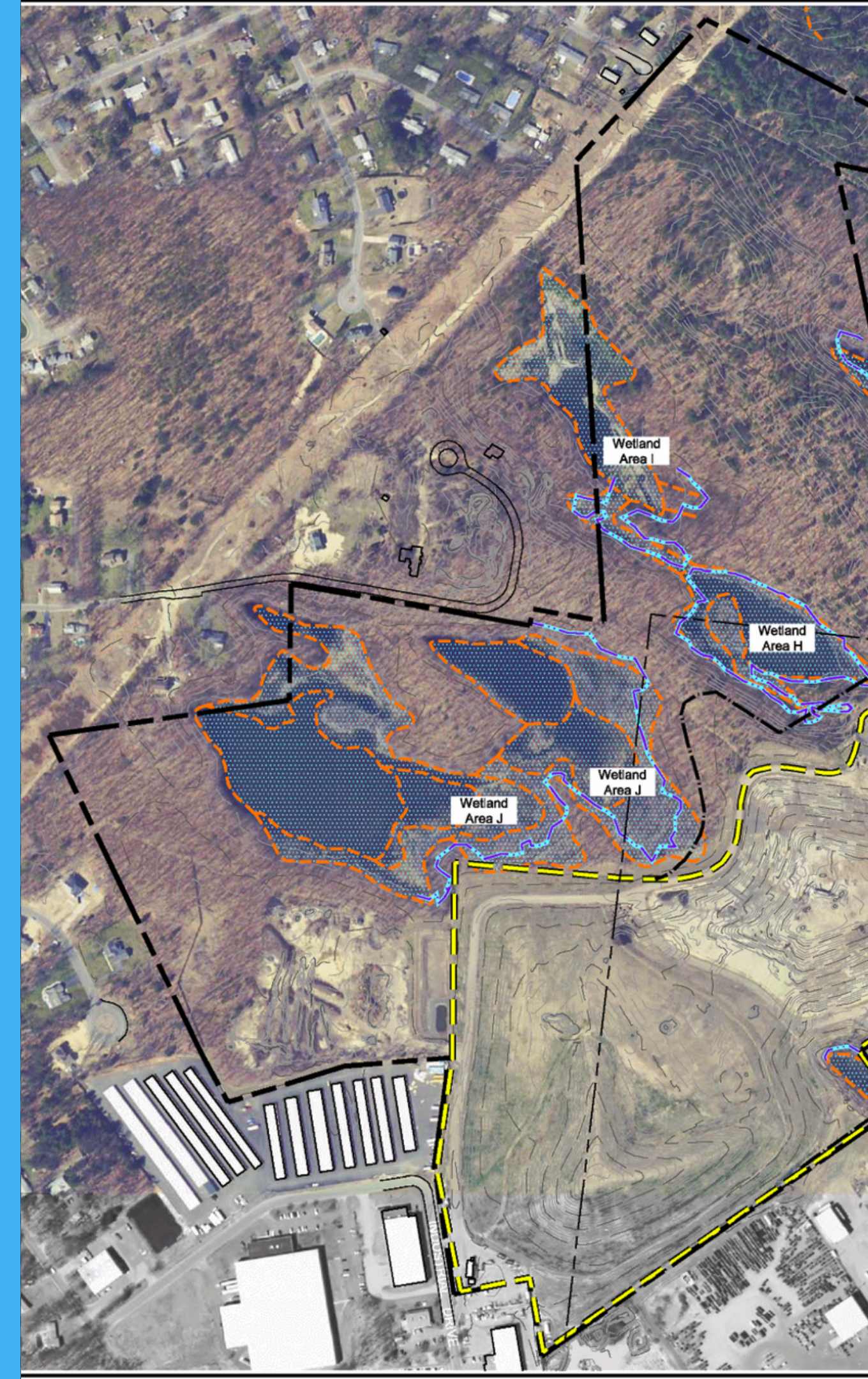
- THE SOUTH HADLEY LANDFILL
- CLOSURE MANAGEMENT, LLC
- CONSTRUCTION SOILS OPPORTUNITY
- CONSTRUCTION SOILS BACKGROUND
- PROPOSAL DETAILS



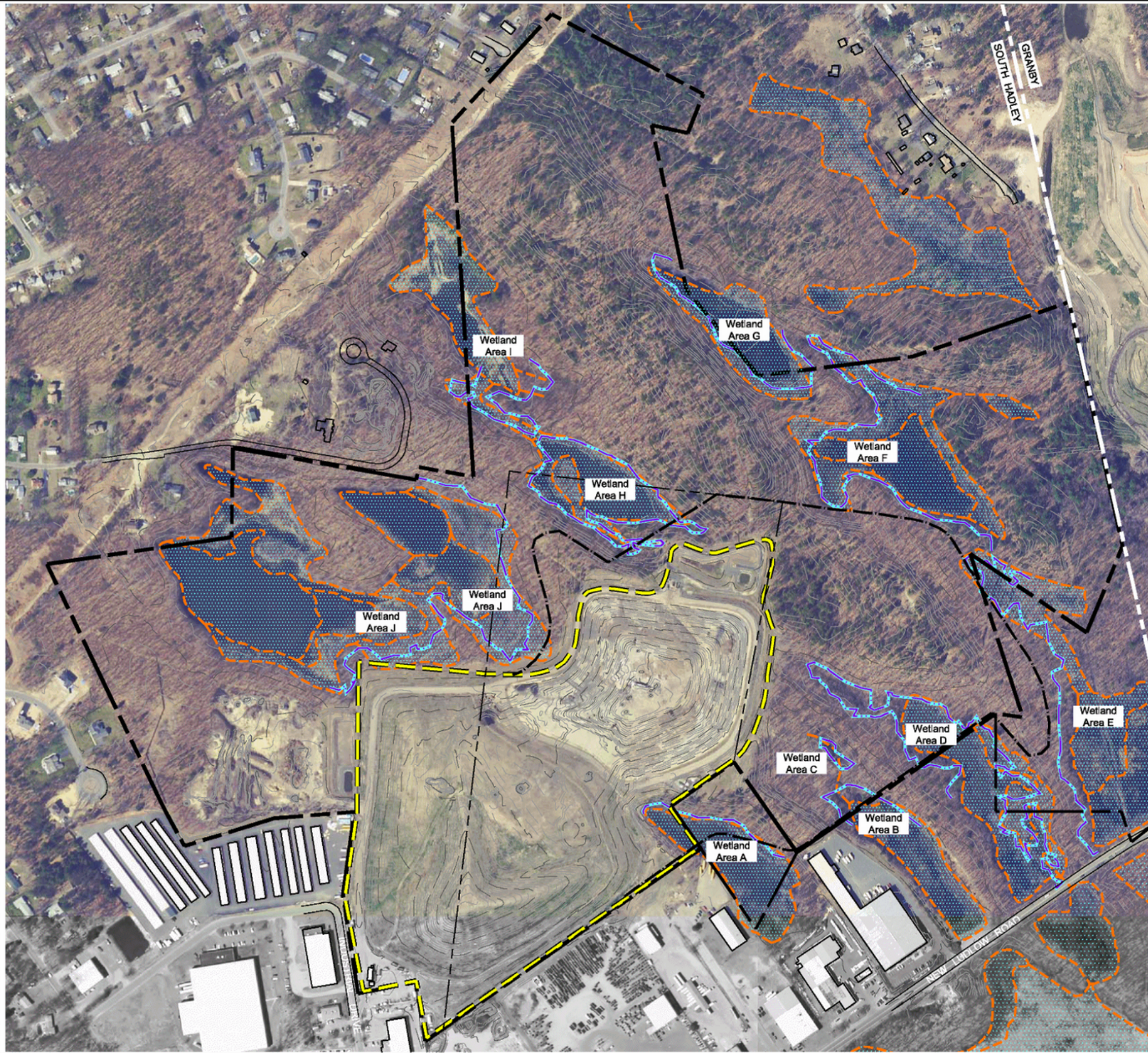
The South Hadley Landfill

Where we are today

The South Hadley Landfill is located on a 53-acre parcel where the town operated an unlined landfill from 1951 until the late 1990s. In 2003, the landfill was reopened and expanded by a private contractor and the site began again accepting mixed solid waste. Plans to expand the landfill further were abandoned in 2013. The landfill stopped accepting waste and a final cap was constructed in 2014.



R:\05366 South Hadley LF\Drwg\Conceptual Lateral Expansion\05366_Fig1 Existing Cond New Aerial 3-08.dwg

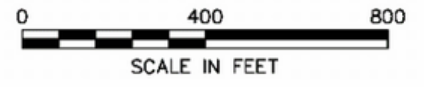


GENERAL NOTES:

Wetland Impacts	
Direct	3.0 Acres
Indirect (100' Buffer)	3.9 Acres
Total Impacts	6.9 Acres

LEGEND

- Property Boundary
- South Hadley Property
- Existing Contours
- Existing Landfill Facility Boundary
- Proposed Landfill Facility Boundary
- Assignment Area Boundary
- Delineated Wetlands (Tighe & Bond)
- Proposed Lateral Expansion
- DEP Wetlands



drawing title			
EXISTING CONDITIONS PLAN NEW AERIAL HAMPSHIRE COUNTY, MA			
designed	CJS	scale	1" = 400'
checked	CJS	date	June 2008
drawn	RMM	project no.	05365
ARM Group Inc. Earth Resource Engineers and Consultants 1129 West Governor Road • Hershey, PA 17033-0797			Figure 1



Where do we go next?



HOW DO WE GET THERE?





CLOSURE MANAGEMENT, LLC

Creating Value

Closure Management's President, Kip Foley, has 35-years of experience managing environmentally impaired properties for both public and private clients. From 1993 until 2018, Mr. Foley served as the CEO & President of Cover Technologies, Inc. where he oversaw the successful remediation of waste sites in Massachusetts, New York, and Rhode Island. Mr. Foley began his career in 1984 at Resource Control, Inc., a pioneering integrated environmental services company.

CONSTRUCTION SOILS OPPORTUNITY



LARGE VOLUME +

Construction projects often generate large volumes of excess soil that cannot be reused onsite.



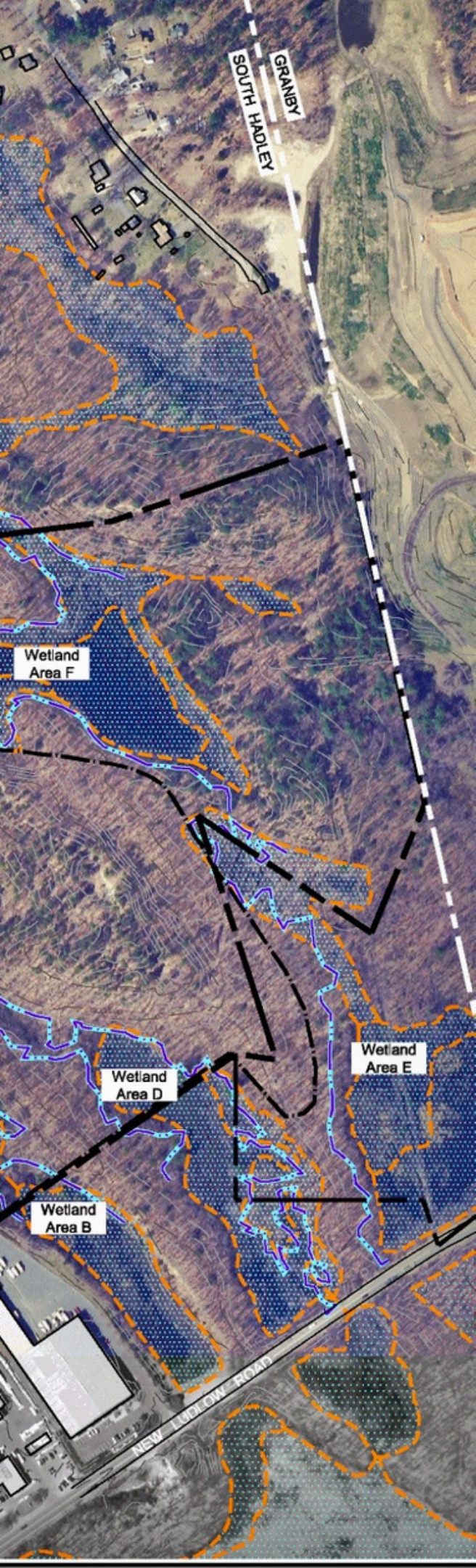
DISPOSAL NEED =

Over the last five years, all but a handful of the remaining regional landfills that accepted construction soils have been closed, leaving few options.



TOWN BENEFIT

Closure Management would be responsible for all project expenses and would pay the town an estimated minimum host payment of \$1,000,000.

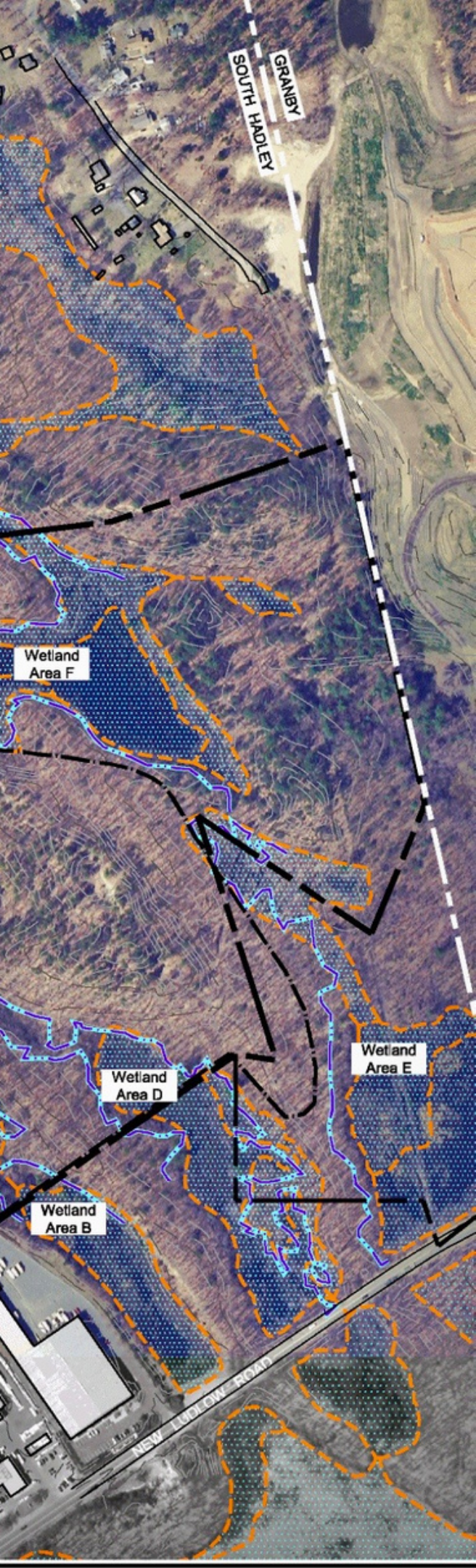


Construction Soil

A Background (1/3)

Construction projects often generate large volumes of excess soil that cannot be reused onsite because of site constraints, geotechnical properties, or levels of contamination of the material. These construction soils are sampled, analyzed and characterized by environmental consultants who determine, in accordance with MassDEP regulations, appropriate reuse or disposal options for the material.

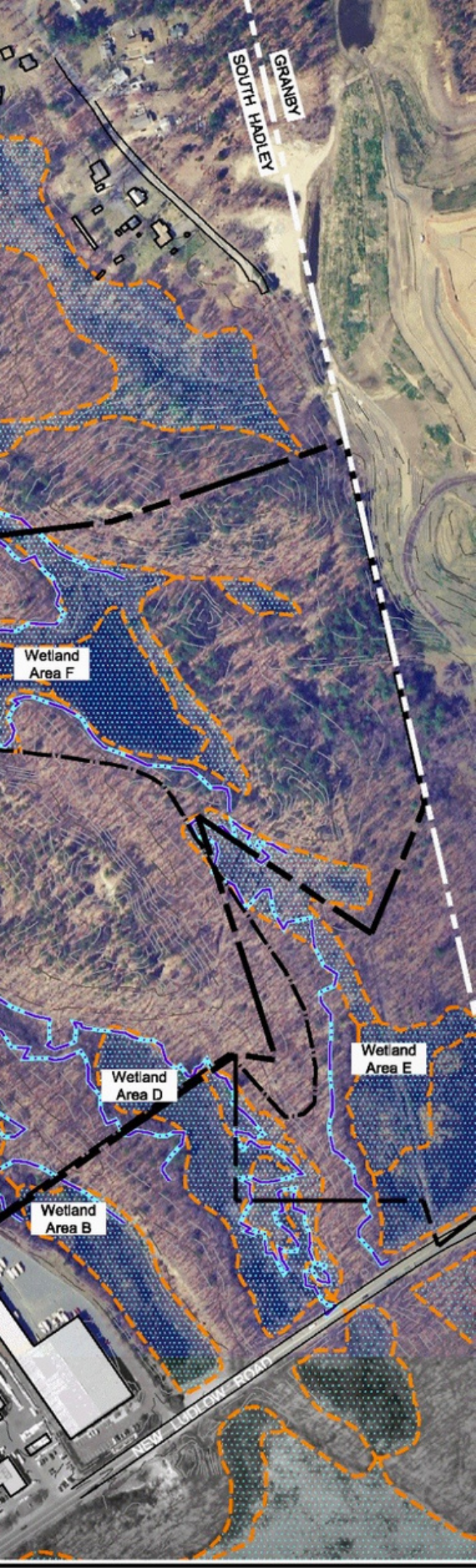




Construction Soil

A Background (2/3)

Historically, a large percentage of the soils generated by urban construction activities have been beneficially reused as landfill cover materials, in accordance with Reuse and Disposal of Contaminated Soil at Massachusetts Landfills -- Massachusetts Department of Environmental Protection Policy #COMM-97



Construction Soil

A Background (3/3)

Environmental policy implemented 40-years ago required the closure of most solid waste landfills in Massachusetts and replaced local landfills with a combination of recycling, waste-to-energy, regional landfills, and transferring of waste to out-of-state facilities. Over the last five years, all but a handful of the remaining regional landfills that accepted construction soils have been closed, leaving few options for so-called Comm 97 soils.





Our Proposal

An Opportunity for South Hadley

Closure Management, LLC proposes to enter into an agreement with the Town of South Hadley to reopen the South Hadley Landfill as a dedicated construction soils landfill.





FIRST STEP: FEASIBILITY STUDY

The proposed agreement provides for a feasibility study to be performed at Closure Management's sole expense.

The feasibility study will determine the technical and financial viability of opening the South Hadley Landfill as a dedicated construction soils landfill.





SECOND STEP: MANAGEMENT

Following the completion of the feasibility study, Closure Management would have the exclusive option to open the landfill for urban soils disposal. Under the proposed agreement terms, Closure Management would be wholly responsible for all project costs, including permitting, engineering, operating, and final capping expenses.





THIRD STEP: RESULTS

Closure Management proposes to pay The Town of South Hadley five dollars (\$5) per ton, for each ton of soil accepted at the facility, with an estimated minimum payment of **ONE MILLION DOLLARS (\$1,000,000)**.





CLOSURE

MANAGEMENT

CONTACT: Kip Foley, President

PHONE

(413) 237-5720

EMAIL

kip@closuremanagement.com

WEBSITE

closuremanagement.com



TOWN OF
**SOUTH
HADLEY** 

MASSACHUSETTS

Jeff Cyr, Chair
 Sarah Etelman, Vice-Chair
 Christopher Geraghty, Clerk
 Andrea Miles
 Bruce Forcier

Michael J. Sullivan
 Town Administrator

Town Administrator Report to the South Hadley Selectboard November 4, 2020

COVID 19 Update.

Due to the recent spike throughout the Commonwealth, Governor Baker has put in place three new or updated orders in hopes to stop the spread of COVID 19. All three can be seen on southhadley.org each is meant to address situations identified as “spreaders”.

Governor Baker’s Order #53 is a revision to the “Stay at Home” order. This update demands all citizens of the Commonwealth to stay home to the greatest extent possible between 9:30 PM and 5 AM beginning November 6th. This has a two-fold intent, it reduces social exposure and takes pressure off first responders as to other issues beyond COVID they must deal with.

#54 limits the number of people gathering at a private residence indoors is set at 10, outdoors at 25 in attempt to address situations which tracing strongly suggests has been at the center of the viral spread in Massachusetts.

#55 revision of the “Face Covering” mandate (#31) and clarifies some of the schools-based requirements regarding masks. The major change here is a face covering must be worn in public even when you **can** maintain a 6-foot distance from others. This clears up some ambiguity and assist those who have had trouble judging distance.

LBOH Count - Events Per Disease and Classification in Jurisdiction

Event Dates from 03/01/2020 to 11/02/2020

Jurisdiction(s) selected: SOUTH HADLEY

Jurisdiction(s) used for report: SOUTH HADLEY

The report contains confidential information. The data are current as of 11/02/2020 and are subject to change.

Disease	Status	Num of Cases	10/27/2020	10/20/2020
Novel Coronavirus	CONFIRMED	236	229	225
Novel Coronavirus	CONTACT	242	231	225
Novel Coronavirus	PROBABLE	10	9	9
Novel Coronavirus	SUSPECT	9	8	8

As you can see the South Hadley numbers are on the rise, with another seven cases just this week. Please note there is one less day in the data due to Election Day. Contact cases nearly doubled from the prior period.



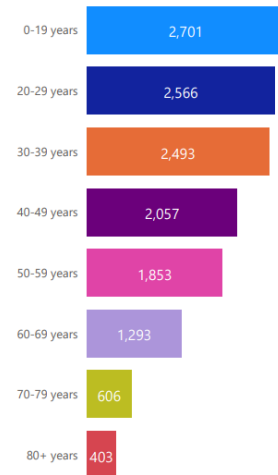
Massachusetts Department of Public Health COVID-19 Dashboard - Tuesday, November 03, 2020

Dashboard of Public Health Indicators

Testing and Cases

Newly Reported Confirmed Cases 923	Total New Molecular Tests Reported 54,843	7-Day Average Positivity 1.78%	Estimated Active Cases 16,681
--	---	--	---

Total Cases By Age Group from 10/17/20-10/30/20**



Hospitalization

Total Confirmed COVID Patients in Hospital 485	Total Confirmed COVID Patients in ICU 96	Average Age of Cases that were Hospitalized* 67
--	--	---

Deaths

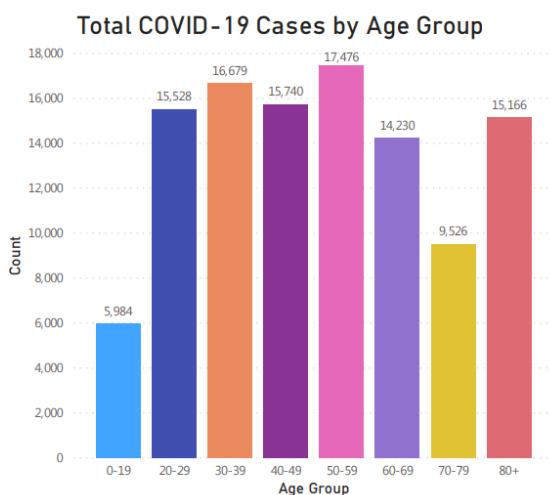
Newly Reported Deaths among Confirmed 12	Average Age of Deaths* 81	Turnaround Time 14-Day Average Turnaround (from Test Sample to Report to DPH)* 2.1
--	-------------------------------------	---

Note: For definitions, please see the Glossary at the end of this document in "Definitions and Disclaimers". Average age of hospitalized cases and deaths are calculated for a two week period covering 10/11/20 to 10/24/20. Please see the most current weekly dashboard for more details <https://www.mass.gov/info-details/covid-19-response-reporting>
*Last updated Wednesday, October 28th; **Last updated Monday, November 2nd

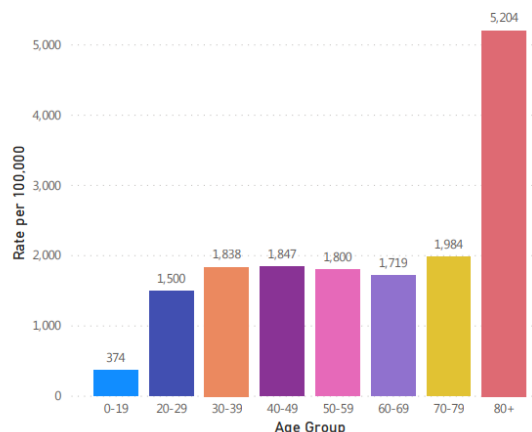


Massachusetts Department of Public Health COVID-19 Dashboard - Wednesday, July 08, 2020

Cases and Case Rate by Age Group



Rate (per 100,000) of Total COVID-19 Cases by Age Group



Average age of Total COVID-19 Cases
51

Data Sources: COVID-19 Data provided by the Bureau of Infectious Disease and Laboratory Sciences, Population Estimates 2011-2018: Small Area Population Estimates 2011-2020, version 2018; Tables and Figures created by the Office of Population Health.
Note: all data are cumulative and current as of 10:00am on the date at the top of the page. Includes both probable and confirmed cases.

I inserted in the preceding graph from November 3 and went back earlier in the pandemic to July 8th in an attempt to show how there has been a shifting of the active case age groups. In July it was clearly infecting 80 plus more and "0-19" less. However, that seems to be no longer the case. The virus has turned its ugly stare to the younger population. It is understood it is less lethal to younger people and by many accounts they recover more quickly, but we also must consider the long-term effects on youth, at this point it is still a great unknown.

South Hadley: GREEN

Total Case Count: **229**

Two Week case Count: **7**

Average Daily Incidence Rate Per 100,000: **2.76**

Relative Change In Case Count: **Higher**

Total Tests: **13,585**

Total Tests Last 14 Days: **2,180**

Positive Tests Last 14 Days: **7**

Percent Positivity: **0.32%**

Change In Percent Positivity: **No Change**

The data to the left does lag about 10 days behind (Mass DPH) also suggested things are on the rise in South Hadley as is the case for about one third of all cities and towns in Massachusetts. It does not match up well with the LBOH figures which are accurate through this past Monday and serves different dates in general.

When I looked at the number of tests in South Hadley it always stands out in comparison to communities of like size. I inquired as to why, there is two main reasons. First MHC students even though there are a relatively small number, staff, faculty on campus etc. are tested twice a week. South Hadley also has a high number of residents working in healthcare who tend to be tested more often than the general population.

The positivity rate has remained steady for a couple of weeks, but given the new figure of seven new case this week I expect that will go up, we also may go from "green" to "yellow" depending how DPH records the dates of the new cases.

It should be noted new policies for employee travel to any state designated as a "hot zone" (which is nearly every state now) and we are pleading with employees to stay safe through the holidays. We ask that they give great thought in respect to family gatherings for the holidays, to make sure they monitor their health and of course practice the regiment of best practices which are all to familiar to each of us.

Town Hall Inclusion and Diversity Training

Town employees continue to participate in a program to help all of us understand our bias and how that may affect our work performance. The Deputy Town Administrator

and I have been working with Dr. Lauren Appio PH. D who works in the field the psychology of the workplace.

Presently Dr. Appio is engaging employees in a survey privately about their experiences, fears, and challenges in respect to diversity. We have come to know that people have a real hard time just talking about race or other traits which make us unique or different. Some often feel threatened or become defensive. We realize we need to break through those personal obstacles and allow ourselves to express feelings and fears in a safe setting to allow us as an organization to move forward.

Dr. Appio will synthesize those discussions with employees, will not share the individual input with anyone, from there she will design several webinars and exercises for staff to hopefully increase their acceptance quotient.

The “understanding workouts” developed will be aimed at enhancing our understanding of others, not only people of color, but different belief systems, economic position, heritage, all the beautiful things that make us different. There will be a public participation component with these efforts as we evolve the project. Dr. Appio is getting to understand the Town of South Hadley better, through its employees. I believe her outsider experience and perspective will be a valuable asset going forward.

Election 2020



I cannot say I am unhappy to see the election over with and I also cannot say enough about the election execution. Town Clerk Carlene Hamlin put forth an uncommon effort. The election process to the public may seem like one day in November and one day in September.... easy peasy! That is not the case.

The Town Clerk started the process of preparation in June and will continue to deal with responsibilities and aspects of the election through December. Just in time to start to

prepare for the local elections.

This year as you are aware with over 8,400 votes cast in South Hadley or approximately 82.5% of all registered voters. With added complexity from the three distinct ways of voting (by-mail, early in-person and the traditional in-person), each with rules, guidelines and regulations topped off with COVID 19 guidelines and the virus on the rise. Mix in the political emotions and cathedral of misinformation known as “social media” it is an amazing feat we did not suffer serious issues and extensive caterwauling.

I would be remiss not to mention the fine work of the Board of Registrars, Wardens, Poll Workers, the South Hadley Police, DPW and cooperation from FD#1 and FD#2, thank you.

Elections always take tremendous internal cooperative planning, this year we especially relied on Sharon Hart, Emergency Management Director/Health Director, Jennifer Gundersen, Chief of Police, Chris Bouchard DPW Director and Jennifer Wolowicz, Deputy Town Administrator to assist the Town Clerk in everything from processing mail in ballot requests to developing and executing the separated precinct plan for added safety and efficiency.

This election was not successful because of who was elected by South Hadley, it was successful because of how it was conducted. With adherence to law and equitable treatment of all parties. Congratulations South Hadley voters, you made your voice heard without rancor or threat no matter who you supported, a fine example of democracy!

MHC Reopening Plans

<https://www.mtholyoke.edu/president/preliminary-information-spring-2021>

Mount Holyoke College has announced preliminary plans to return about 60% of their students to campus. They will announce more details in the weeks to come but even the preliminary outline is thoughtful and takes steps to protect not only students, but the citizens of South Hadley.

The plan includes regular twice weekly testing, like what is in place now, for all persons permitted on campus (staff, faculty, students). All food served will be "grab and go", no hosting of guests on campus and other restrictions, including for isolation if needed.

As we all are getting use to this is very much subject to change. I would encourage you to go to the link to see a fuller description of what is being done.

Transfer Station Leaf Pick up

As many of you have already taken advantage of the number of scheduled timeslots for the Transfer Station has been increased and we will be picking up leaves curbside with regular collections will be ending November 20th, we hope people have taken advantage and enjoy this service.

It should be noted financially the Transfer/Solid Waste operation is starting to head towards break even. We cannot thank the vast majority of residents enough for their cooperation or understanding. However, we must remind everyone this service is self-funding and as such is calculated based reasonably on housing units throughout South Hadley. It is not designed or intended to be used by for or no profit business entities. It is

meant for households and when it is used otherwise it threatens the long-term viability of the operation and there fore threatens a public service.

When you are issued a sticker it is meant to be for your home use we ask that anyone who uses it for something other than their home or the address the permit was issued for to consider the threat your misuse posses to the future of the service.

Thank you for your leadership and guidance and I encourage everyone to stay safe during these remarkably trying times.

Respectfully submitted,

Michael J. Sullivan
Town Administrator, South Hadley

Executive Session Motion

I move the South Hadley Selectboard convene in Executive Session under the provisions and consistent with MGL Chapter 39 for the purpose of contract discussions in relationship to AFSCME Local 1033 request to bargain and to discuss the Town Administrator contract and not return to public session.