

WE'RE ON A ROLL

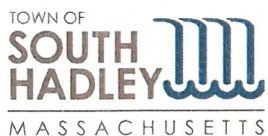
**South Hadley,
say hello
to your new
recycling cart!**

Your home is receiving this shiny new recycling cart thanks to an important relationship between the Town of South Hadley, and The Recycling Partnership, a nonprofit organization utilizing public-private partnerships to transform recycling all across America. Your community was selected to receive grant support because of South Hadley's longstanding dedication to advancing recycling in the community. Simply put, South Hadley outgrew its old recycling bins. Recycling carts have many advantages over small recycling bins. They roll easily to the curb, they provide more capacity for recyclables, and they reduce litter by protecting your materials from the elements. This makes it easier for you to recycle more. And the more we recycle these valuable materials, instead of sending them to landfill, the more feedstock we provide to manufacturers to use in the creation of the products and packaging we buy and use every day. In all, everyone wins when recycling with carts.

The Town of South Hadley, The Recycling Partnership and The Partnership's funding members know that recycling is fundamental to a healthy environment and economy. When we recycle, jobs are created, our environment is protected and communities thrive. Thank you, South Hadley, for making the most of this cart by recycling.



Keefe Harrison
Chief Executive Officer
The Recycling Partnership



Lisa Wong
Town Administrator
South Hadley, MA



To Learn More, visit:

southhadleyma.gov/trashcarts

or call **413-538-5030** ext **6505**

SOUTH HADLEY, MEET YOUR NEW CARTS!

No more sorting, bending or lifting—your new recycling carts will have two wheels for easy maneuvering and a lid to keep things tidy. The extra space will make recycling easier and provide more room for storage—a true win-win—for residents.

WHO IS ELIGIBLE TO PARTICIPATE IN THE CITY'S CURBSIDE RECYCLING PROGRAM?

Currently, only City residential solid waste customers (those that receive garbage services provided by the City) are eligible to receive curbside recycling services.

WHEN IS CURBSIDE RECYCLING COLLECTED IN MY AREA AND AT WHAT TIME SHOULD I PLACE IT OUT FOR COLLECTION?

Your recycling is collected on the same day as your garbage and should be placed out the night before collection or no later than 6 a.m. on your scheduled collection day.

WHAT TYPES OF RECYCLABLES ARE COLLECTED AT CURBSIDE?

Here is what we collect at curbside from homes:

- Plastic bottles and containers only (items should be rinsed and clean)
- Aluminum cans (items should be rinsed and clean)
- Steel/tin cans (items should be rinsed and clean)
- Newspaper
- Cardboard (flatten) Mixed office paper, junk mail, etc.
- Mixed office paper, junk mail, etc.
- Glass (only clear and brown; items should be rinsed and clean)

ARE THERE ANY SPECIAL INSTRUCTIONS FOR PLACING RECYCLABLES OUT FOR COLLECTION?

Recyclables should be placed a few feet away from the trash and garbage and within three (3) feet from the roadway.

HOW DO I SET MY CART OUT PROPERLY ON COLLECTION DAY?

Place your cart on the curb after 6:00 p.m. on the night before your collection day. Make sure the cart is accessible to the crew. Do not place it behind trees, mailboxes, lamp posts or parked cars.

CAN I RECYCLE HOSES, CORDS, WIRES OR CLOTHES IN MY CART?

No. These items are considered “tangles” as they wrap around equipment at the recycling processing facility, creating a safety hazard for workers and causing facility shutdowns. Scrap metal, like chains and metal hangers, can be taken to a scrap metal recycler.

CAN I RECYCLE PLASTIC BAGS OR WRAP IN MY CART?

No. Plastic bags and wrap causes equipment jams at recycling processing facilities. These items can be taken to your local retail or grocery stores for recycling drop off.

WHERE DO I STORE MY RECYCLING AND TRASH CARTS?

Please store your carts behind or beside your home, on or under a back porch, or inside your garage. Do not store them on the sidewalk in front of your home or at the curb.

A RECYCLING AND TRASH CART WAS DELIVERED TO MY HOME, BUT I DO NOT WANT IT. WILL YOU TAKE IT BACK?

No. Residents must use the carts delivered for recycling and trash moving forward. No GREEN BAGS will be accepted for trash collection.

WHAT DO I DO WITH MY OLD BIN?

Residents are welcome to keep bins for other household uses or additional storage. They can be disposed of as bulky waste at the South Hadley DPW, located at 10 Industrial Drive, South Hadley, without an appointment.

DO I HAVE TO PUT MY RECYCLABLES AND TRASH IN MY CART?

Yes. Recycling should be placed loose in the recycle cart. No plastic bags. Trash should be stored in trash bags and then placed in your trash cart for disposal. Trash and recycling beyond what fits inside the provided carts must be held until the next regularly scheduled collection day, disposed of at the Recycle Center by appointment or contract with Republic Services directly for off-week collection services.

WHAT IF MY CART IS STOLEN OR DAMAGED?

Each cart will be assigned to an addressed and can be tracked using an RFID tag. If your cart is lost or stolen, please call The South Hadley DPW, who can try to locate your cart at 413-538-5030. Additionally, a police report should be filed with the South Hadley Police Department, immediately upon vandalism or theft.

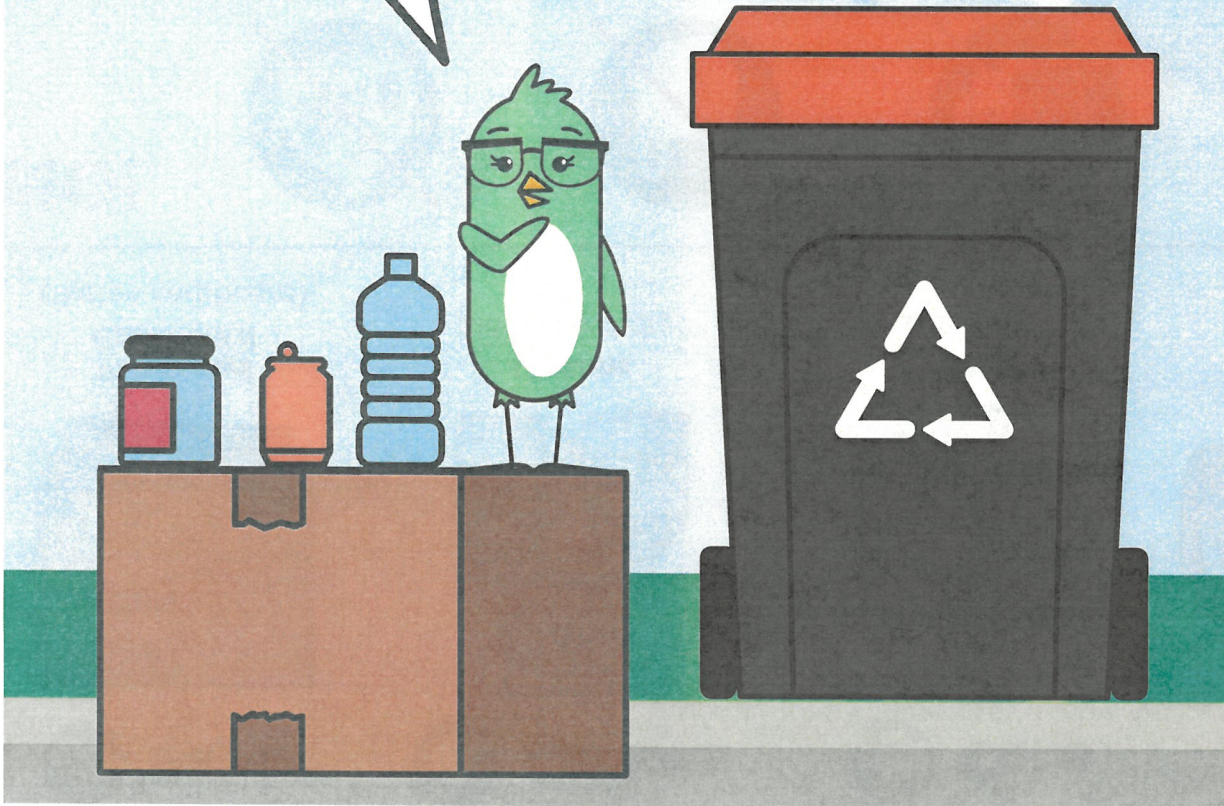
WHY ARE HOUSEHOLDS NOT ALLOWED TO UTILIZE THEIR OWN WHEELED CARTS?

The Town must ensure that all carts utilized meet the quality requirements to support automated collections. The Department of Public Works does not have the staffing resources to verify every existing cart's quality and our goal to standardize the collection containers at the curb to improve overall aesthetics in Town. Republic Services will be directed to only service carts issued and stamped with the Town of South Hadley's seal.

WHAT HAPPENS IF MY TOWN ISSUED CARTS GETS DAMAGED?

Damaged carts will be repaired or replaced by the Town at no cost to the reporting household. Residents may contact the DPW to submit an official service request.

Recycling can feel messy.
What about a clean start
with a new recycling cart?



How to use your New Single-stream Recycling Cart:

★ STEP 1

Place all recycling items together, loose, in one cart. Green bags are no longer accepted for recycling.

★ STEP 2

You can start placing your cart out for service on July 1.

★ STEP 3

Place your cart out for collection by 7:00 am on your collection day. Collection days are not changing.



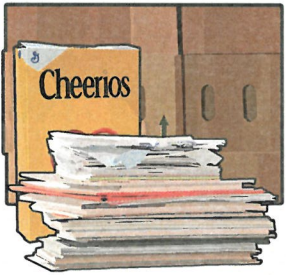


RECYCLE

THANK YOU FOR RECYCLING THESE:



Paper



Paper and Cardboard

(flatten cardboard)



Cartons



Cartons

(empty and dry)



Cans



Metals

(cans, aerosol, foil)



Plastic



Bottles, Jugs and Tubs

(empty and dry)



Glass



Glass Bottles and Jars

(empty and dry)

NO!



Do Not Bag Recyclables

(no trash)



No Plastic Bags or Plastic Wraps

(store drop-off only)



No Batteries or Electronics

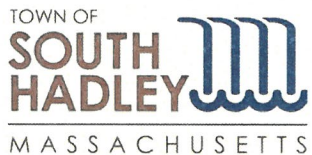


No Food or Liquid

(empty all containers)



No Household Hazardous Waste



southhadleyma.gov/trashcarts

Email: kquesnel@southhadleyma.gov

413-538-5030 ext 6505



Funded in part by

The Recycling Partnership

Building a Better Recycling System

Proper Cart Placement Is the Key to Automated Service



- Have the cart at the curb by 6 a.m. on your collection day.
- Place the cart at least 5 feet from any object – like a car, tree, pole, fire hydrant, mailbox, electrical box, or cable box – so the automated arm can reach your cart.
- Please maintain this same distance of 5 feet between recycling and waste carts.
- Don't lean anything against the cart.
- Don't place your cart under a tree.
- Place carts 1 foot from the curb or edge of the street.
- Place the cart with the arrows on the lid pointing toward the street and the handle toward your house.
- Remember to close the lid of the cart.
- Please don't allow children to play in or around the carts. Our trucks use mechanical arms to pick up the recycling and waste carts.



Sustainability in Action

