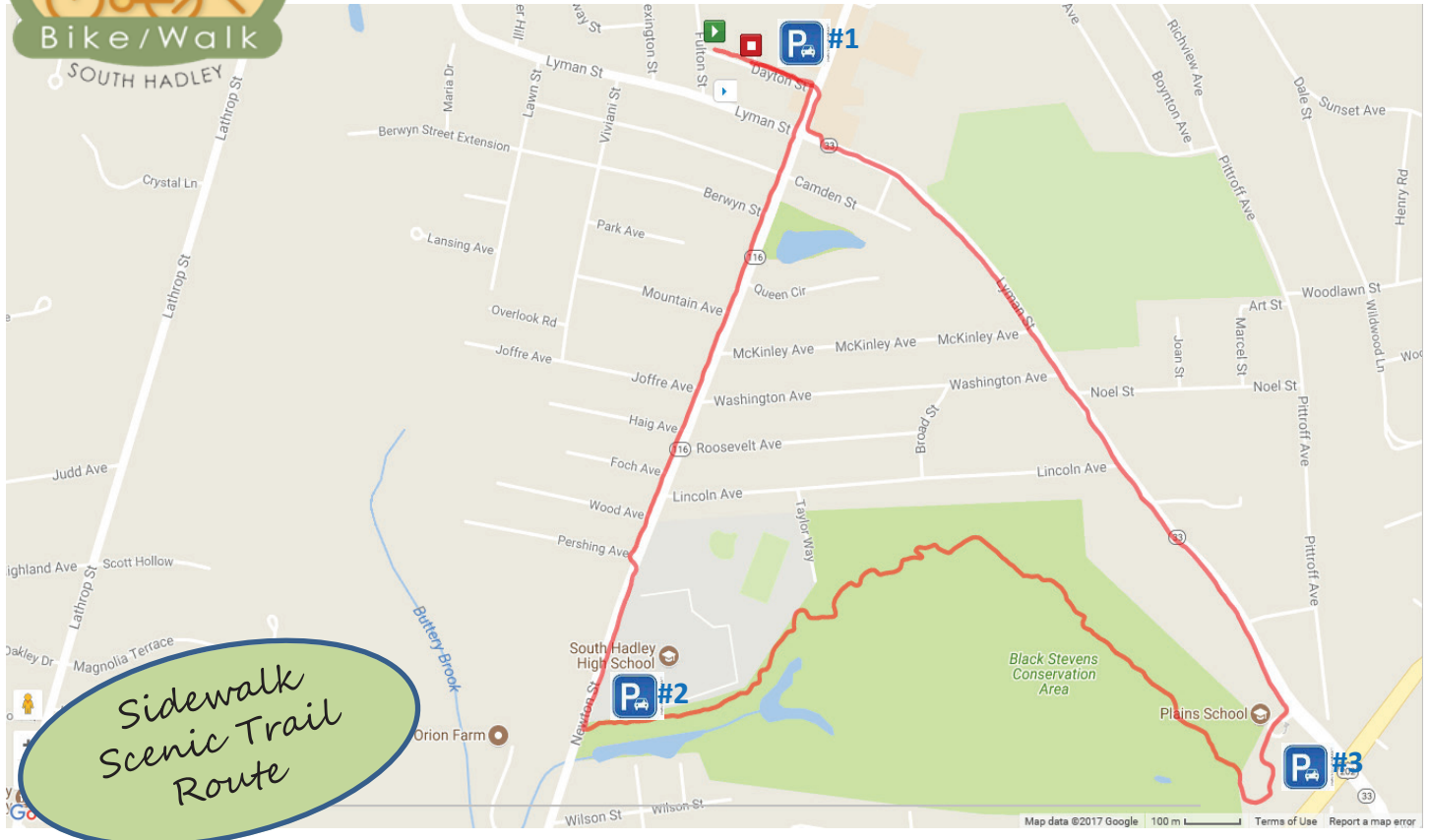




# SENIOR CENTER / BLACK STEVENS CONSERVATION AREA TREK



### Parking Availability:

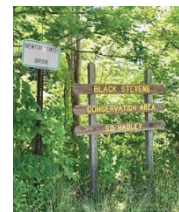
- #1: South Hadley Senior Center: Dayton Street
- #2: South Hadley High School: Rte 116 (Park in Student Parking Lot close to trail entry)
- #3: South Hadley Plains School: Rte 202 (Park away from school building)

### Black Stevens Entry Signs:

Rte 202



Rte 116:



**Black Stevens Sightings:** American robins, gray and black squirrels, white breasted nuthatches, chipmunks, red-back salamanders, pileated woodpeckers and killdeer.

**Trek Length & Details:** 2.87 miles / Sidewalk Scenic Trail Route in the **Black Stevens Conservation Area** starts on the Main Trail by Plains School, continues onto the Border Trail then reconnects with the Main Trail to exit on Newton Street.

**Duration:** Approximately 1 hour

**Level of Difficulty:**



This Sidewalk Scenic Trail Route was created by Huguette Supinski for the South Hadley Bike Walk Committee (BWC)—November 2017.

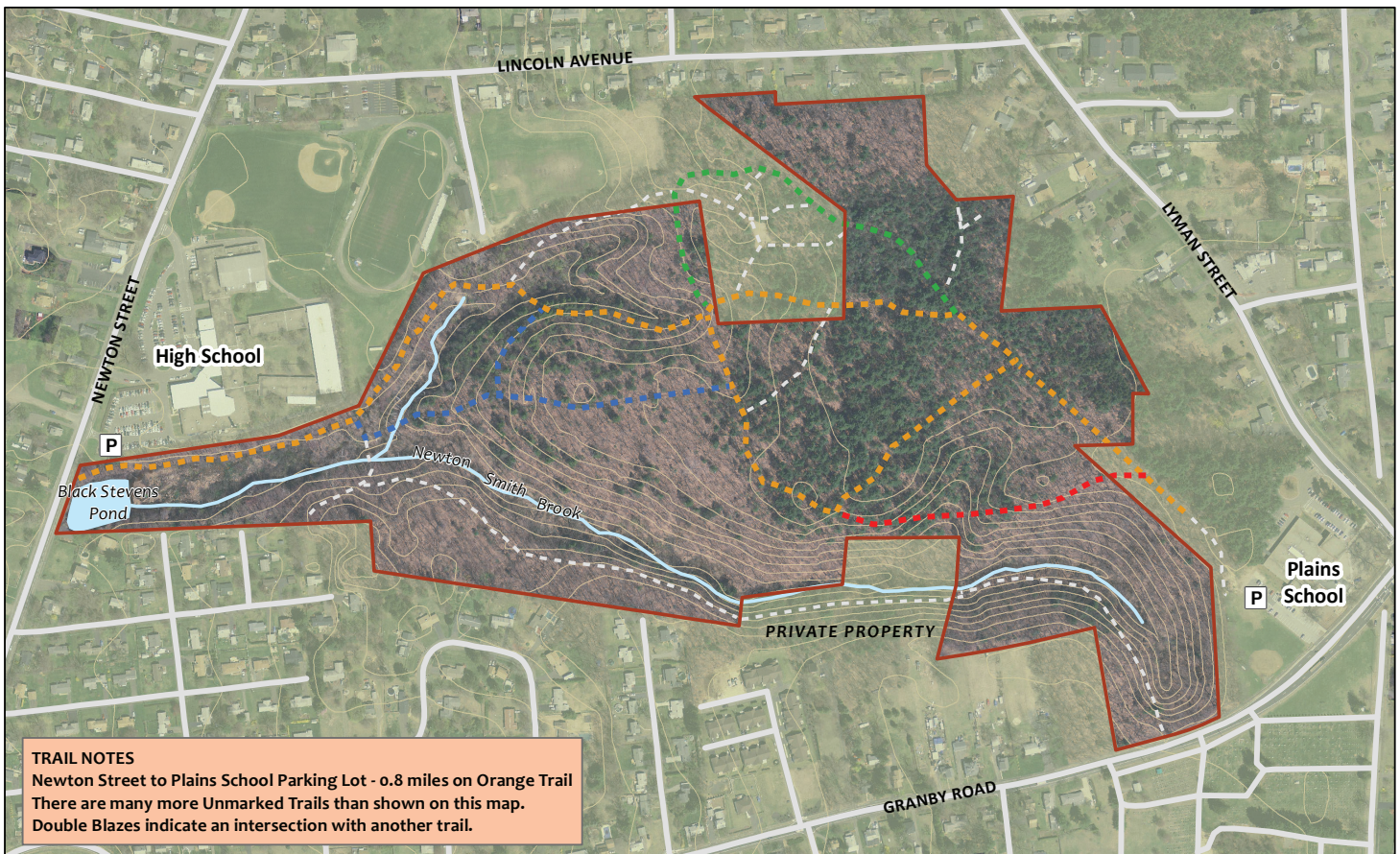
[southhadleyma.gov/bikewalk](http://southhadleyma.gov/bikewalk)



## SENIOR CENTER / BLACK STEVENS CONSERVATION AREA TREK (Page 2) South Hadley Sidewalk Scenic Trail Route

### Black Stevens Conservation Area Detail:

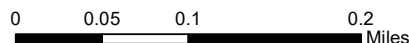
The Sidewalk Scenic Trail route through Black Stevens connects between the access points at South Hadley High School on Newton Street (Rt. 116) and Plains Elementary School on Granby Road (Rt. 202). This area consists of 62 acres, which were acquired in three sections: Seven acres in 1963, previously Ittner property; 8 acres in 1966, previously Smith property; and 47 acres in 1981, previously owned by the Stevens Paper Mill. The three sections were acquired with the assistance of Self-Help funds given by the state. The pond originally provided high quality water for the paper mill in South Hadley Falls. The area was named for Dr. M. Gene Black, a former Conservation Commission member, and also for the Stevens Paper Mill. It is home to scarlet tanagers, orioles, grosbeaks, thrushes and oven birds. There have been sightings of great horned owls, great blue heron and cuckoos. Sunfish, carp, muskrat and turtles also dwell here. Flora include starflower, pink lady slipper and wild lily-of-the-valley. The area is predominately wooded and hilly, with streams in deep ravines, a pond next to the high school, and wetlands where an old pond drained. The variety of habitats has been used by teachers for science classes. Students also use the paths for travel to school and for cross-county track practice. Discharge of firearms is prohibited.



### Legend

- Blue Trail
- Green Trail
- Orange Trail
- Red Trail
- Unmarked Trail
- Black Stevens CA
- Contours (ft)
- Parking

## Black Stevens Conservation Area Trail Map



DATA SOURCES:  
 MassGIS & South Hadley  
 Planning and Conservation Department

This Sidewalk Scenic Trail route has been updated with the Conservation Commission's new 2018 Black Stevens Trail Map.