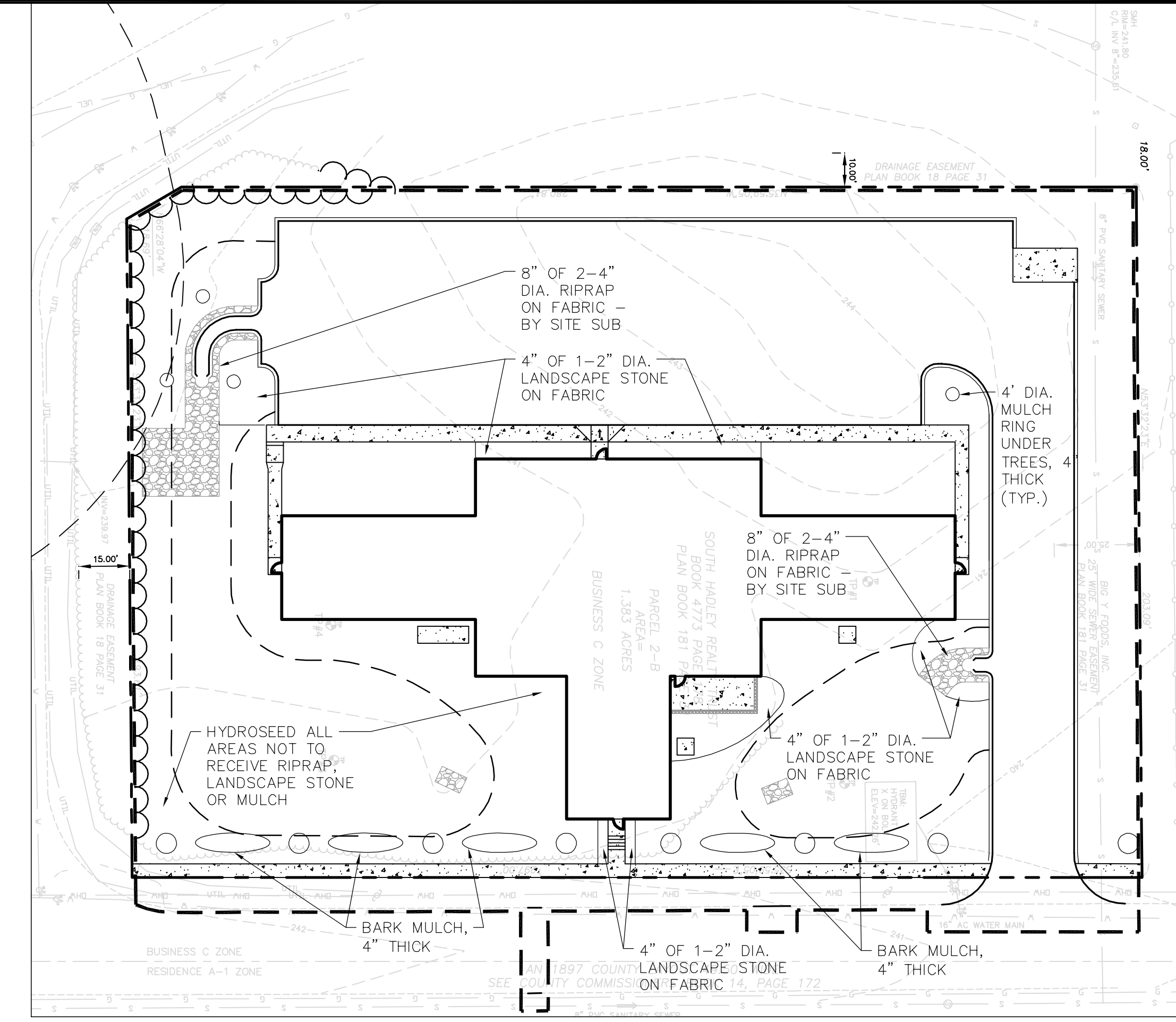


## Site Landscape Notes

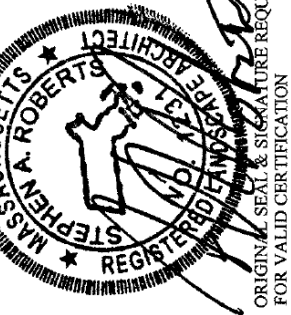
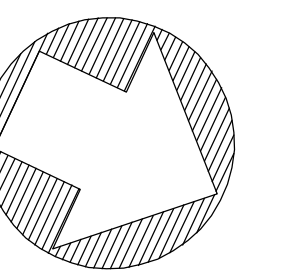
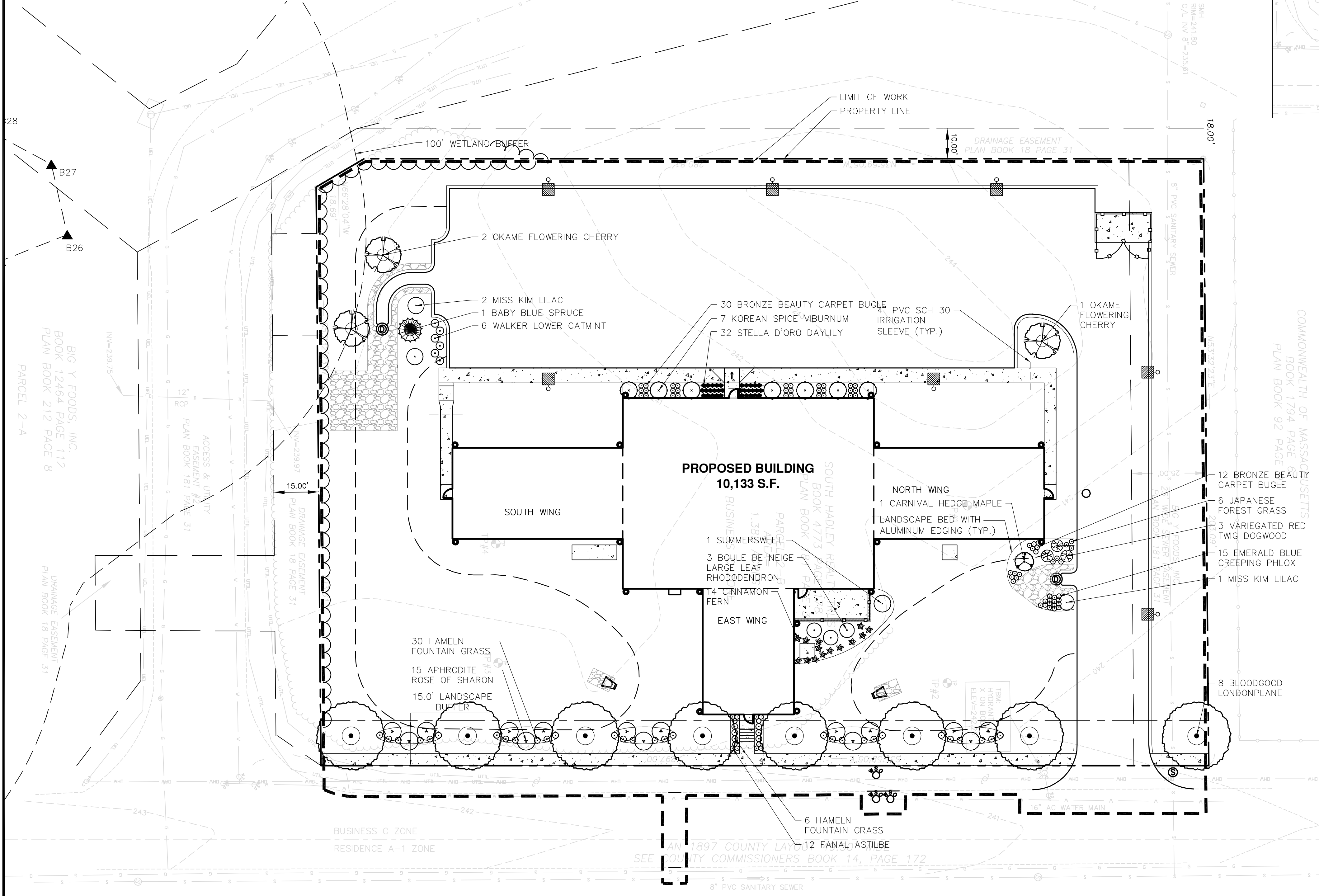
- LANDSCAPE DESIGN BY STEPHEN A. ROBERTS LANDSCAPE ARCHITECTURE & CONSTRUCTION, 1160 BAY STREET, SPRINGFIELD, MA 01109 (413) 214-6990.
- PLANTS ARE ALL STANDARD STOCK AND CONFORM TO THE MINIMUM GUIDELINES AS SPECIFIED BY THE AMERICAN ASSOCIATION OF NURSERYMEN.
- ALL NEW PLANTS TO BE BALLED AND BURLAPPED OR CONTAINER-GROWN.
- SET PLANT MATERIAL IN PLANTING PIT TO PROPER GRADE AND ALIGNMENT.
- SET PLANTS UPRIGHT AND FACED TO GIVE THE BEST APPEARANCE OR RELATIONSHIP TO EACH OTHER OR ADJACENT STRUCTURES WITH SAME RELATION TO FINISH GRADE AS BEFORE TRANSPLANTING.
- TREES TO BE SET IN 4" DIAMETER MULCH BEDS TO MAKE IT EASY TO MAINTAIN WITH MINIMUM EFFORT.
- PLANTING BEDS SHALL BE COVERED BY A VARIETY OF PERENNIAL GROUND COVER
- NO FILLING SHALL BE PERMITTED AROUND TRUNKS AND STEMS OF PLANTINGS.
- BACK FILL PIT WITH PREPARED PLANTING MIXTURE FILLING AND TAMPING UNDER AND AROUND ROOT BALL TO FILL IN ALL VOIDS.
- REMOVE OR FOLD UNDER BURLAP OR POLY AND ROPE FROM TOP HALF OF ROOT BALL.
- AFTER PIT HAS BEEN BACK FILLED 2/3RDS, COMPACT SOIL, THEN WATER THOROUGHLY, AND ALLOW TO SETTLE AROUND ROOT BALL, COMPLETE BACK FILLING FORMING A RING OF SOIL AROUND EDGE OF EACH PLANTING PIT TO HOLD WATER, MULCH AND THOROUGHLY SOAK, WRAP AND/OR STAKE DESIGNATED TREES.
- AFTER PLANTING, PRUNE BRANCHES OF DECIDUOUS STOCK TO BALANCE LOSS OF ROOTS IN SUCH A MANNER AS TO PRESERVE NATURAL CHARACTER APPROPRIATE TO PARTICULAR REQUIREMENTS OF THE PLANT.
- REMOVE BROKEN, DAMAGED, AND ASYMMETRICAL BRANCHES AND SUFFICIENT OTHER GROWTH TO ENSURE HEALTHY AND SYMMETRICAL GROWTH OF NEW WOOD ON DECIDUOUS STOCK. PRUNE EVERGREENS ONLY TO THE EXTENT OF REMOVING BROKEN OR DAMAGED BRANCHES.
- ALL SHRUBS AND TREES SHALL BE FREE OF DISEASE AND INSECTS. SHALL NOT HAVE ANY BROKEN OR DAMAGED BRANCHES AND SHALL BE OF THE BEST POSSIBLE QUALITY FOR ITS SIZE, SHAPE AND CLASS.
- AREAS DESIGNATED AS LAWN AND AREAS DISTURBED DURING CONSTRUCTION SHALL RECEIVE 6" MINIMUM OF LOAM. AREAS DESIGNATED AS PLANTING BEDS SHALL RECEIVE 12" MINIMUM OF LOAM.
- LANDSCAPE BEDS ADJACENT TO THE BUILDINGS SHALL HAVE A MINIMUM 3" OF 1"-2" DIAMETER ANGULAR LANDSCAPE STONE THAT EXTENDS A MINIMUM OF 18" FROM THE BUILDING.
- ANODIZED ALUMINUM EDGING SHALL BE USED IN ALL LANDSCAPE STONE BEDS.
- ADDITIONAL SNOW STORAGE SHALL BE PROVIDED IN PAVED AREAS AND REMOVED OFFSITE IF NECESSARY.

## Site Planting Schedule

Qty	Botanical Name	Common Name	Size	Remarks
<b>Trees</b>				
1	Acer compestre Carnival	CARNIVAL HEDGE MAPLE	5'-6"	
8	Platanus x Acerifolia Bloodgood	BLOODGOOD LONDONPLANE	2-2.5'	
1	Picea pungens Baby Blue	BABY BLUE SPRUCE	5'-6"	
3	Prunus x incom	OKAME FLOWERING CHERRY	5'-6"	
<b>Shrubs</b>				
3	Cornus Alba Elegantisima	VARIEGATED RED TWIG DOGWOOD	#3 Cont.	
1	Clethra Alnifolia	SUMMERSWEET	#3 Cont.	
15	Hibiscus syriacus Aphrodite	APHRODITE ROSE OF SHARON	#3 Cont.	
3	Rhododendron Catawbiense	BOULE DE NEIGE LARGE LEAF RHODODENDRON	#3 Cont.	
3	Syringa Patula Miss Kim	MISS KIM LILAC	#3 Cont.	
7	Viburnum Coriesii	KOREA SPICE VIBURNUM	#3 Cont.	
<b>Ornamental Grasses</b>				
36	Pennisetum alopecuroides Hameln	HAMELN FOUNTAIN GRASS	#1 Cont.	
<b>Perennials and Annuals</b>				
12	Astilbe x arendsii Fanal	FANAL ASTILBE	#1 Cont.	
32	Hemerocallis Stella D'Oro	STELLA D'ORO DAYLILLY	#1 Cont.	
6	Hakonechloa maera Aureola	JAPANESE FOREST GRASS	#1 Cont.	
6	Nepeta x faassenii Walkers Low	WALKER LOW CATMINT	#1 Cont.	
14	Osmunda cinnamomea	CINNAMON FERN	#1 Cont.	
<b>Groundcovers</b>				
42	Ajuga reptans Bronze Beauty	BRONZE BEAUTY CARPET BUGLE	#1 Cont.	
15	Phlox subulata Emerald Blue	EMERALD BLUE CREEPING PHLOX	#1 Cont.	

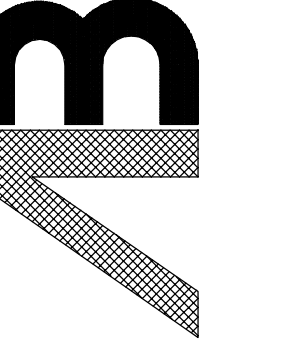


**GROUND COVER LEGEND**  
1" = 30'



COPYRIGHT 2015  
ASSOCIATED BUILDERS, INC.  
INCORPORATED IN THE  
STATE OF MASSACHUSETTS  
PROFESSIONAL SERVICE  
ASSOCIATED BUILDERS, INC.  
A MEMBER OF THE BUILDING  
INDUSTRY OF MASSACHUSETTS  
CONSISTENT OF ASSOCIATED  
BUILDERS, INC.

**ASSOCIATED BUILDERS, INC.**  
4 INDUSTRIAL DRIVE, SOUTH HADLEY, MA 01075  
PHONE (413) 536-0021 FAX (413) 536-9908  
EMAIL: abuilders@abuilders.com



### LANDSCAPING PLAN

Proposed Facility  
Center for Human Development  
Old Lyman Road  
South Hadley, MA 01075

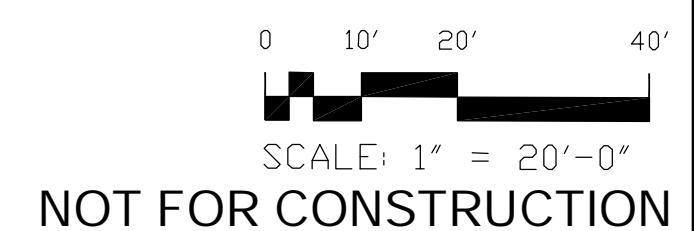
### PLAN DATE

DATE	DESCRIPTION
01/25/19	ISSUED FOR BID
02/01/19	ISSUED FOR LOCAL APPROVALS

SCALE: 1" = 20'

JOB #: 18008

SHEET #: L4.1



NOT FOR CONSTRUCTION