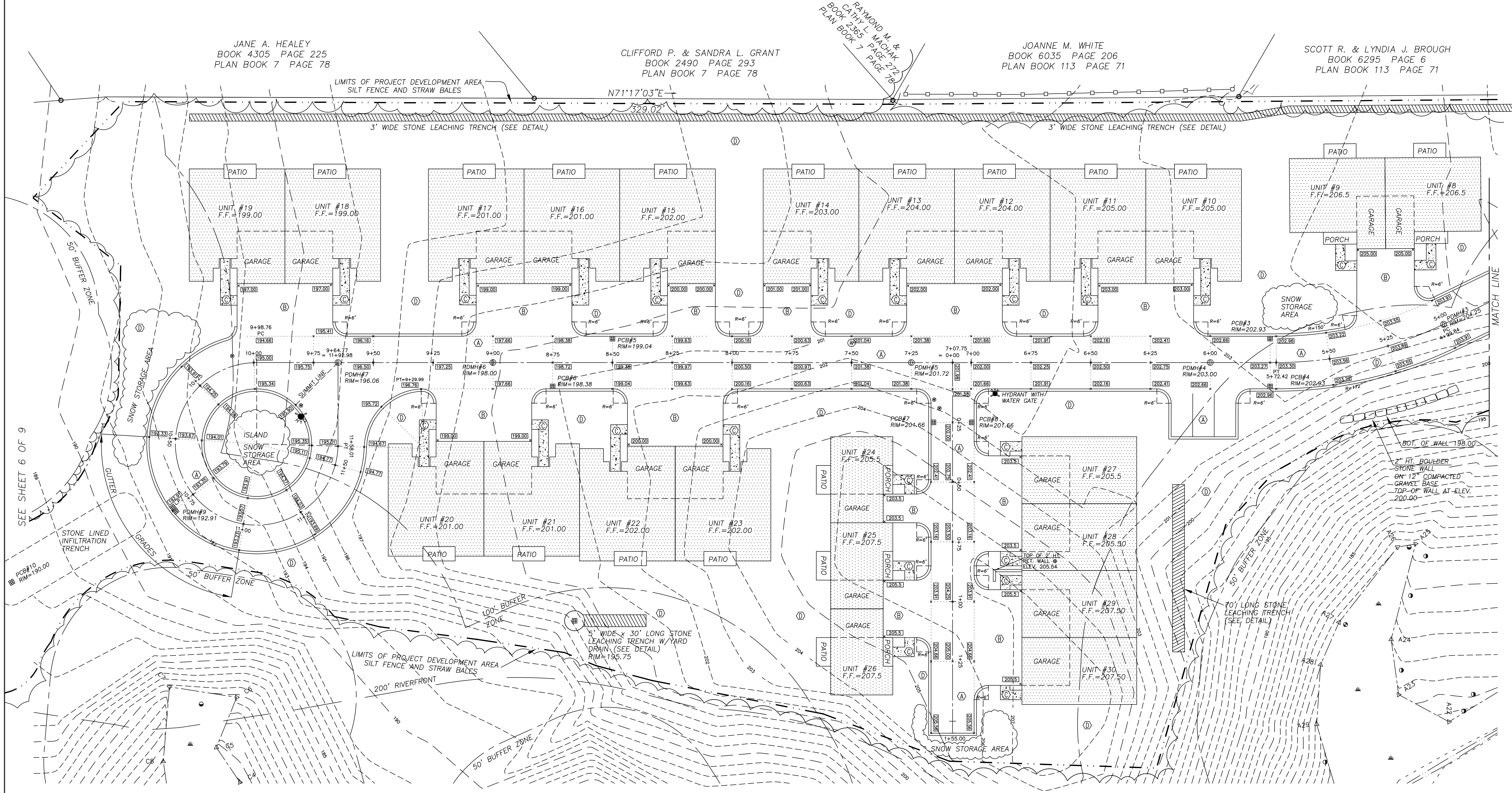


STRUCTURES TABLE

PDMH#1 (STA 3+17.77) RIM=207.65 INV. 12" HDPE OUT=200.00 INV. 12" IN (PCB#1)=201.80 INV. 12" IN (PCB#2)=201.70	PCB#1 (STA 3+00, 11'R) RIM=207.66 INV. 12" HDPE OUT=202.00 SUMP=198.00
PDMH#2 (STA 3+28.29) RIM=206.03 INV. 15" HDPE IN/OUT=199.20	PCB#2 (STA 2+90, 11'L) RIM=207.86 INV. 12" HDPE OUT=202.00 SUMP=198.00
PDMH#3 (STA 4+99.84) RIM=204.25 INV. 15" HDPE IN/OUT=198.20	PCB#3 (STA 5+75, 11'R) RIM=204.25 INV. 12" HDPE OUT=196.00 SUMP=192.00
PDMH#4 (STA 6+00) RIM=203.00 INV. 15" HDPE IN=197.20 INV. 18" HDPE OUT=195.00 INV. 12" HDPE IN (PCB#3 & #4)=195.70	PCB#4 (STA 5+75, 11'L) RIM=202.93 INV. 12" HDPE OUT=196.00 SUMP=192.00
PDMH#5 (STA 7+25) RIM=201.72 INV. 18" HDPE IN/OUT=193.75 INV. 12" HDPE IN (PCB#7)=196.25 INV. 12" HDPE IN (PCB#8)=196.25	PCB#5 (STA 8+50, 11'R) RIM=199.04 INV. 12" HDPE OUT=191.00 SUMP=187.00
PDMH#6 (STA 9+00) RIM=198.00 INV. 18" HDPE IN=192.00 INV. 18" HDPE OUT=189.00 INV. 12" HDPE IN (PCB#5)=190.50 INV. 12" HDPE IN (PCB#6)=190.75	PCB#6 (STA 8+75, 11'L) RIM=198.38 INV. 12" HDPE OUT=191.00 SUMP=187.00
PDMH#7 (STA 9+64.77) RIM=196.06 INV. 18" HDPE IN/OUT=191.35	PCB#7 (STA 0+25, 9'R) RIM=201.66 INV. 12" HDPE OUT=196.60 SUMP=192.66
PDMH#8 RIM=188.50 INV. 6" HDPE IN=185.50 INV. 8" HDPE OUT=184.00	PCB#8 (STA 0+25, 9'L) RIM=201.66 INV. 12" HDPE OUT=196.60 SUMP=192.66
EXISTING SMH#1 RIM=212.26 INV. EXIST. 8" IN/OUT=203.51 NEW INV. 8" PVC IN=204.00 (FROM PSMH#1)	PCB#9 (STA 10+75, 11'R) (DOUBLE PCB'S) RIM=192.91 INV. 12" HDPE OUT=188.00 SUMP=184.00
PSMH#1 (STA 1+00, 5.5'L) RIM=210.83 INV. 10" PVC IN/OUT=204.68 INV. 4" IN FROM UNIT #2=205.50	PCB#10 RIM=190.00 INV. 12" HDPE OUT=186.90 SUMP=182.90
PSMH#2 (STA 2+00, 5.5'L) RIM=209.58 INV. 10" PVC IN=205.50 INV. 10" PVC OUT=205.18 INV. 6" IN FROM UNITS 4, 5, 6 & 7=205.25	CONTROL STRUCTURE RIM=184.25 INV. 15" HDPE OUT=181.25 BOTTOM OF STRUCTURE=177.25
	STORMCEPTOR#1 RIM=190.5 INV. 12" HDPE IN=187.05 INV. 12" HDPE OUT=186.88



LEGEND

- IRON PIPE FOUND
- BOUND FOUND
- CHAIN LINK FENCE
- STOCKADE FENCE
- BARBED WIRE FENCE
- 1' CONTOUR INTERVAL
- 5' CONTOUR INTERVAL
- SPOT ELEVATION
- WATER MAIN/GATE
- GAS MAIN/GATE
- OVERHEAD UTILITIES
- ELECTRIC LINE
- CABLE TV
- STORM DRAIN/MANHOLE
- SANITARY SEWER/MANHOLE
- BERM/CURB
- TELEPHONE
- STORMCEPTOR
- CATCH BASIN
- UTILITY POLE
- LIGHT POLE
- HYDRANT
- SIGN
- HYDRIC SOIL
- NON-HYDRIC SOIL
- SEM-HYDRIC SOIL
- TEST PIT LOCATION
- WETLAND
- WETLAND DELINEATION FLAG
- WETLAND BOUNDARY
- 100' BUFFER ZONE BOUNDARY
- 50' BUFFER ZONE
- 200' RIVERFRONT
- PROPOSED CONTOURS
- PROPOSED SANITARY SEWER/MANHOLE
- PROPOSED SEWER FORCEMAIN
- PROPOSED WATER/GATE
- PROPOSED HYDRANT
- PROPOSED STORM DRAIN/MANHOLE
- PROPOSED CATCH BASIN
- PROPOSED YARD DRAIN
- PROPOSED SURFACE SCHEDULE
- LIMITS OF WORK/SILT FENCE & STRAW BALES
- PDMH=PROPOSED DRAIN MANHOLE
- PSMH=PROPOSED SEWER MANHOLE
- PCB=PROPOSED CATCH BASIN

PLAN DATE: APRIL 15, 2011

REVISIONS

DATE	COMMENTS
JULY 6, 2011	REVISED WETLAND BOUNDARIES, SEE NOTES 4 & 5
JULY 14, 2011	REVISED WETLAND FLAG X-2 & REVISED BUFFER ZONES
AUG. 24, 2011	REVISED SET OF PLANS, SHEET 1, 3 THROUGH 10

SCALE: 1" = 20'

SHEET 4 OF 10

PAVING PLAN

FORM H APPLICATION, SECTION 6.00,
MORE THAN ONE BUILDING FOR DWELLING PURPOSES PER LOT
SITE PLAN SHOWING 31 UNITS

RIVERCREST CONDOMINIUM
FERRY STREET
SOUTH HADLEY, MASSACHUSETTS

PREPARED FOR
RIVERCREST CONDOMINIUMS LLC
1421 GRANBY ROAD
CHICOPEE, MASSACHUSETTS 01020

HERITAGE SURVEYS, INC.
PROFESSIONAL SURVEYORS AND ENGINEERS
241 COLLEGE HIGHWAY & CLARK STREET
POST OFFICE BOX 1
SOUTHAMPTON, MASSACHUSETTS
(413) 527-3600

SCOTT R. & LYNDIA J. BROUGH
BOOK 6295 PAGE 6
PLAN BOOK 113 PAGE 71

KRISTEN M. DRAKE
BOOK 9174 PAGE 256

JANE A. HEALEY
BOOK 4305 PAGE 225
PLAN BOOK 7 PAGE 78

CLIFFORD P. & SANDRA L. GRANT
BOOK 2490 PAGE 293
PLAN BOOK 7 PAGE 78

JOANNE M. WHITE
BOOK 6035 PAGE 206
PLAN BOOK 113 PAGE 71

SCOTT R. & LYNDIA J. BROUGH
BOOK 6295 PAGE 6
PLAN BOOK 113 PAGE 71

NOTE:
ADDITIONAL SNOW STORAGE AREAS WILL BE LOCATED
BETWEEN DRIVEWAYS TO UNITS AND ALONG PROPOSED
ROADWAY.