

**www.nitscheng.com**  
 2 Center Plaza, Suite 430  
 Boston, MA 02108  
 T: (617) 338-0063  
 F: (617) 338-6472

- Civil Engineering
- Land Surveying
- Transportation Engineering
- Sustainable Site Consulting
- Planning
- GIS



**15 PROPERZI WAY  
 SOMERVILLE, MA  
 01243 - 3228**

Revisions:

REVISED PERMIT SET - 2/15/2013

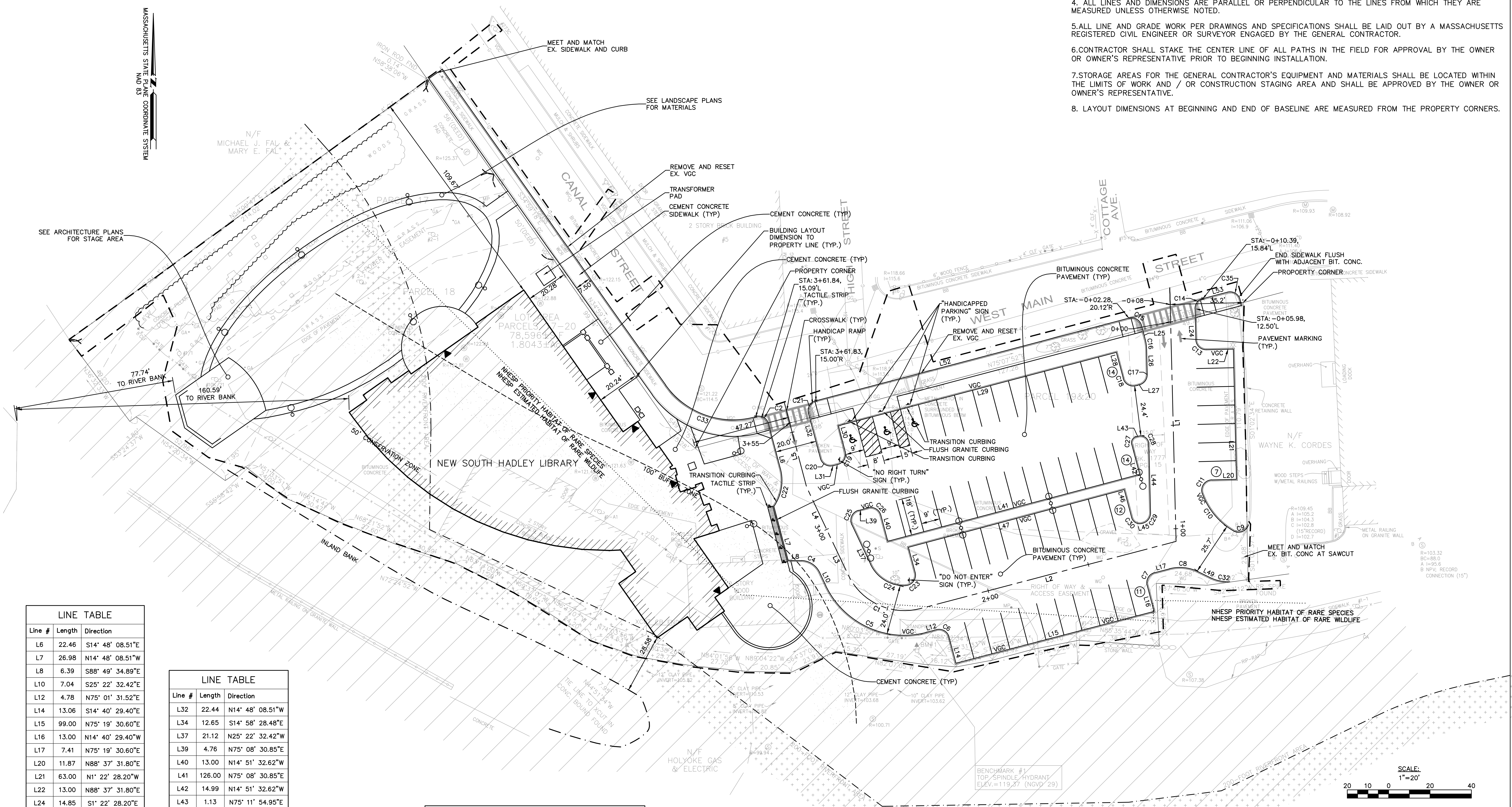
**SOUTH HADLEY LIBRARY**  
 SOUTH HADLEY, MA

Sheet Title:  
**LAYOUT AND MATERIALS PLAN**  
 Date: 21-NOV-12 Drawn By: TJM  
 Scale: As Shown Project No.: 9165

**C-1**

**LAYOUT & MATERIALS NOTES:**

1. PAVEMENT DIMENSIONS ARE TO THE FACE OF THE CURB.
2. BUILDING SETBACKS ARE TO THE EXTERIOR FOUNDATION WALL.
3. BUILDING LAYOUT INDICATES THE LOCATION AND ORIENTATION OF THE BUILDING. SEE ARCHITECTURAL DRAWINGS FOR ACTUAL BUILDING/FOUNDATION DIMENSIONS. THE CONTRACTOR SHALL VERIFY BUILDING/FOUNDATION DIMENSIONS WITH THE ARCHITECT/STRUCTURAL ENGINEER PRIOR TO FOUNDATION CONSTRUCTION.
4. ALL LINES AND DIMENSIONS ARE PARALLEL OR PERPENDICULAR TO THE LINES FROM WHICH THEY ARE MEASURED UNLESS OTHERWISE NOTED.
5. ALL LINE AND GRADE WORK PER DRAWINGS AND SPECIFICATIONS SHALL BE LAID OUT BY A MASSACHUSETTS REGISTERED CIVIL ENGINEER OR SURVEYOR ENGAGED BY THE GENERAL CONTRACTOR.
6. CONTRACTOR SHALL STAKE THE CENTER LINE OF ALL PATHS IN THE FIELD FOR APPROVAL BY THE OWNER OR OWNER'S REPRESENTATIVE PRIOR TO BEGINNING INSTALLATION.
7. STORAGE AREAS FOR THE GENERAL CONTRACTOR'S EQUIPMENT AND MATERIALS SHALL BE LOCATED WITHIN THE LIMITS OF WORK AND / OR CONSTRUCTION STAGING AREA AND SHALL BE APPROVED BY THE OWNER OR OWNER'S REPRESENTATIVE.
8. LAYOUT DIMENSIONS AT BEGINNING AND END OF BASELINE ARE MEASURED FROM THE PROPERTY CORNERS.



**LINE TABLE**

Line #	Length	Direction
L6	22.46	S14° 48' 08.51"E
L7	26.98	N14° 48' 08.51"W
L8	6.39	S88° 49' 34.89"E
L10	7.04	S25° 22' 32.42"E
L12	4.78	N75° 01' 31.52"E
L14	13.06	S14° 40' 29.40"E
L15	99.00	N75° 19' 30.60"E
L16	13.00	N14° 40' 29.40"W
L17	7.41	N75° 19' 30.60"E
L20	11.87	N88° 37' 31.80"E
L21	63.00	N1° 22' 28.20"W
L22	13.00	N88° 37' 31.80"E
L24	14.85	S1° 22' 28.20"E
L25	7.03	S14° 47' 14.30"E
L26	12.23	N1° 22' 28.20"W
L27	1.77	N75° 11' 54.95"E
L28	13.00	S14° 48' 08.51"E
L29	139.00	N75° 11' 54.95"E
L30	13.00	N14° 48' 08.51"W
L31	2.40	N75° 11' 54.95"E

**LINE TABLE**

Line #	Length	Direction
L32	22.44	N14° 48' 08.51"W
L34	12.65	N14° 58' 28.48"E
L37	21.12	N25° 22' 32.42"W
L39	4.76	N75° 08' 30.85"E
L40	13.00	N14° 51' 32.62"W
L41	126.00	N75° 08' 30.85"E
L42	14.99	N14° 51' 32.62"W
L43	1.13	N75° 11' 54.95"E
L44	33.30	N1° 22' 28.20"W
L45	0.48	S75° 01' 34.99"W
L46	14.00	N14° 58' 28.48"W
L47	108.00	N75° 01' 34.99"E
L49	6.59	S64° 03' 19.70"E
L52	156.42	S75° 12' 45.70"W
L53	12.26	N75° 12' 45.70"E

**CURVE TABLE**

Curve #	Length	Radius	Delta	Chord Direction	Chord Length
C2	7.94	5.00	91.03	N60° 18' 56"W	7.13
C4	11.07	10.00	63.45	S57° 06' 04"E	10.52
C5	58.35	42.00	79.60	S65° 10' 30"E	53.77
C6	7.88	5.00	90.30	S59° 49' 29"E	7.09
C7	7.85	5.00	90.00	S30° 19' 31"W	7.07
C8	14.18	20.00	40.62	S84° 21' 55"E	13.88
C9	9.03	5.00	103.52	N68° 29' 17"E	7.85
C10	23.77	34.17	39.85	N39° 49' 29"W	23.29
C11	9.47	5.00	108.52	N34° 21' 51"E	8.12
C13	7.85	5.00	90.00	S46° 22' 28"E	7.07
C14	6.68	5.00	76.59	S36° 55' 09"W	6.20
C15	7.85	5.00	90.00	N59° 47' 14"W	7.07
C16	4.68	20.00	13.41	N8° 04' 51"W	4.67
C17	6.68	5.00	76.57	N36° 54' 43"E	6.20
C18	7.85	5.00	90.00	S59° 48' 07"E	7.07
C19	7.85	5.00	90.00	N30° 11' 53"E	7.07
C20	7.85	5.00	90.00	S59° 48' 07"E	7.07
C21	7.86	5.00	90.02	S30° 12' 19"W	7.07
C22	18.99	22.00	49.46	N9° 55' 39"E	18.41
C23	9.01	5.00	103.30	S36° 40' 27"W	7.84

**CURVE TABLE**

Curve #	Length	Radius	Delta	Chord Direction	Chord Length
C24	20.83	18.00	66.30	N58° 31' 35"W	19.69
C25	8.77	5.00	100.52	N24° 52' 59"E	7.69
C26	7.85	5.00	90.00	N59° 51' 31"W	7.07
C27	4.72	3.00	90.06	S30° 10' 11"W	4.24
C28	7.22	4.00	103.43	N53° 05' 17"W	6.28
C29	6.67	5.00	76.40	N36° 49' 33"E	6.18
C30	6.28	4.00	90.00	S59° 58' 27"E	5.66
C32	9.74	20.00	27.89	S78° 00' 06"E	9.64
C33	49.74	40.50	70.37	S70° 38' 31"E	46.88
C35	7.85	5.00	90.00	N59° 47' 14"W	7.07

**CURVE TABLE: ALIGNMENTS**

CURVE #	RADIUS	LENGTH	CHORD DIRECTION	START POINT	END POINT
C1	30.00	41.54	N65° 02' 47.09"W	(357959.98,2905272.62)	(357925.25,2905288.78)

**LINE TABLE: ALIGNMENTS**

LINE #	LENGTH	DIRECTION	START POINT	END POINT
L1	114.59	S1° 25' 04.42"E	(358080.80,2905419.66)	(358083.64,2905305.10)
L2	127.85	S75° 16' 58.23"W	(358083.64,2905305.10)	(357959.98,2905272.62)
L3	18.64	N25° 22' 32.42"W	(357925.25,2905288.78)	(357917.26,2905305.62)
L4	28.39	N25° 22' 32.42"W	(357917.26,2905305.62)	(357905.10,2905331.27)
L5	32.12	N14° 48' 08.51"W	(357905.10,2905331.27)	(357896.89,2905362.33)

