

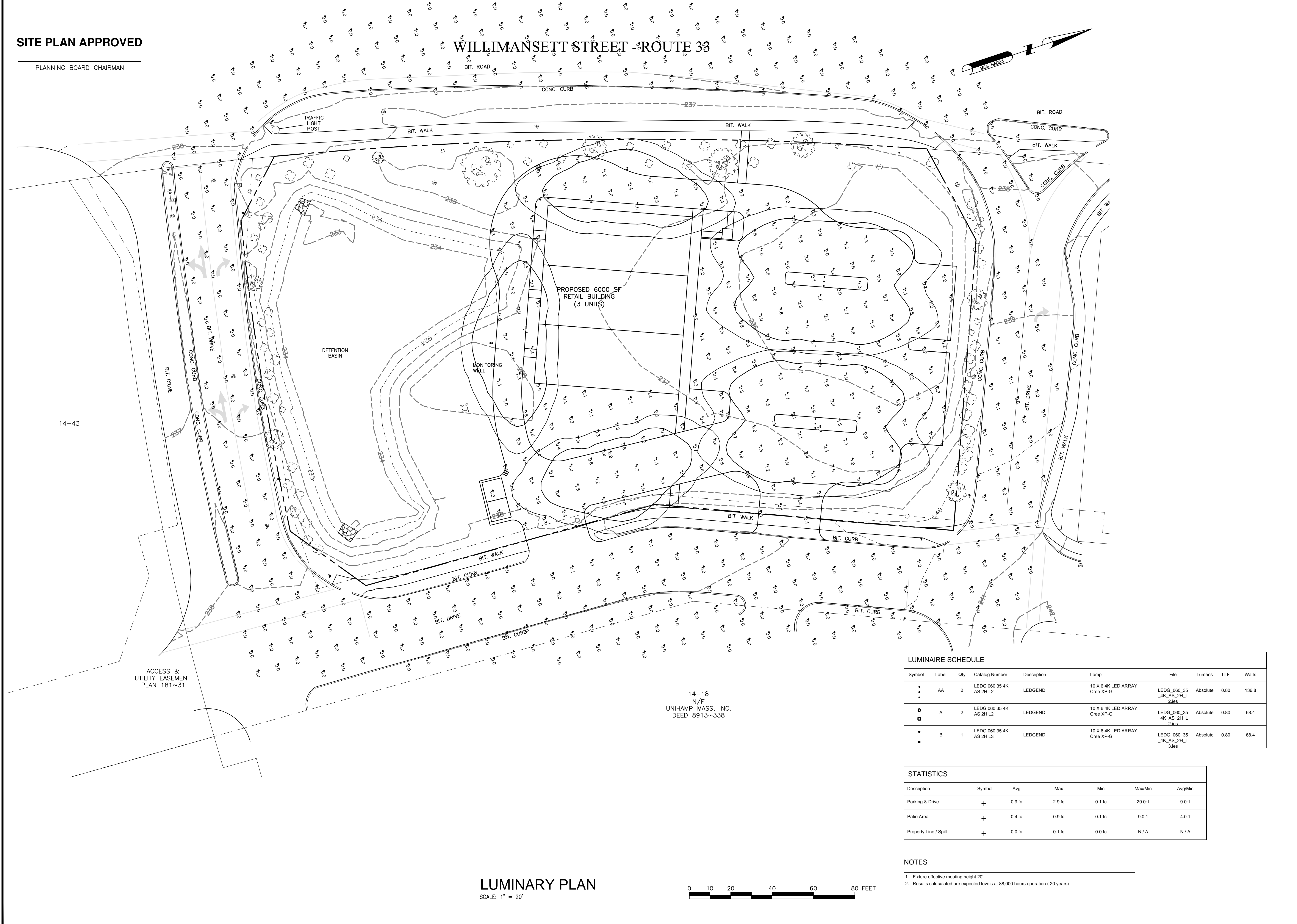
SITE PLAN APPROVED

PLANNING BOARD CHAIRMAN



116 PLEASANT STREET
 SUITE 302-A
 P.O. BOX 692
 EASTHAMPTON, MA 01027
 TEL: (413) 588-8139
 FAX: (413) 517-0590

WILLIMANSETT STREET - ROUTE 33



14-43

ACCESS &
 UTILITY EASEMENT
 PLAN 181~31

PROPOSED 6000 SF
 RETAIL BUILDING
 (3 UNITS)

DETECTION
 BASIN

MONITORING
 WELL

14-18
 N/F
 UNIHAMP MASS, INC.
 DEED 8913~338

LUMINAIRE SCHEDULE									
Symbol	Label	Qty	Catalog Number	Description	Lamp	File	Lumens	LLF	Watts
•	AA	2	LEDG 060 35 4K AS 2H L2	LEDGEND	10 X 6 4K LED ARRAY Cree XP-G	LEDG_060_35_4K_AS_2H_L2.lis	Absolute	0.80	136.8
○	A	2	LEDG 060 35 4K AS 2H L2	LEDGEND	10 X 6 4K LED ARRAY Cree XP-G	LEDG_060_35_4K_AS_2H_L2.lis	Absolute	0.80	68.4
•	B	1	LEDG 060 35 4K AS 2H L3	LEDGEND	10 X 6 4K LED ARRAY Cree XP-G	LEDG_060_35_4K_AS_2H_L3.lis	Absolute	0.80	68.4

STATISTICS						
Description	Symbol	Avg	Max	Min	Max/Min	Avg/Min
Parking & Drive	+	0.9 fc	2.9 fc	0.1 fc	29.0:1	9.0:1
Patio Area	+	0.4 fc	0.9 fc	0.1 fc	9.0:1	4.0:1
Property Line / Spill	+	0.0 fc	0.1 fc	0.0 fc	N/A	N/A

- NOTES
1. Fixture effective mounting height 20'
 2. Results calculated are expected levels at 88,000 hours operation (20 years)

LUMINARY PLAN
 SCALE: 1" = 20'



PROJECT NO: CVL-12-024

DRAWN BY: SB

CHECKED BY: MM

SUBMITTALS

No.	Description	Date
0	05-30-13 ORIGINAL CONCEPT	

CVL-12-024
 SOUTH HADLEY
 SQUARE RETAIL
 DEVELOPMENT

SHEET TITLE

LUMINARY PLAN

SHEET NUMBER

L-1