

TITUS POND

INHABITANTS OF THE TOWN OF SOUTH HADLEY
BK. 1875 PG. 120
ASSESSOR MAP 27 PARCEL 41

CAMDEN STREET

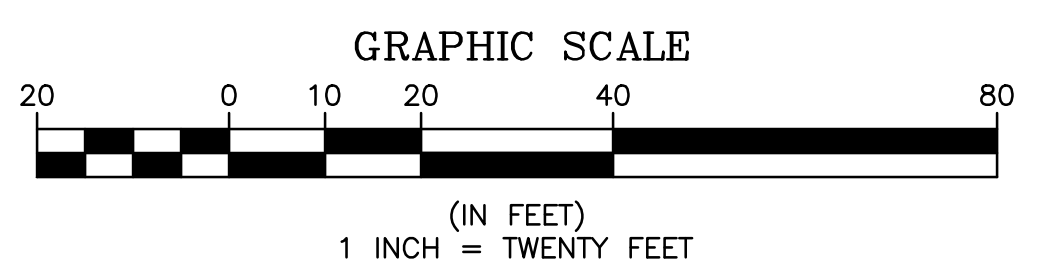
QUEEN CIRCLE

SEE SHEET 2
MATCH LINE

LEGEND

- | | | | |
|---|----------|--|-------------------------------------|
| FLAGGED WETLAND (ESTABLISHED BY CLIENT) | --- K203 | ⊗ SANITARY SEWER MANHOLE | AC AIR CONDITIONER |
| CONTOUR (INDEX) | --- 100 | ⊙ STORM DRAIN MANHOLE | GM GAS METER |
| CONTOUR (INTERMEDIATE) | --- 103 | □ CATCH BASIN | RCP REINFORCED CONCRETE PIPE |
| EDGE OF VEGETATION | ~ ~ ~ | ⊕ TELECOMM MANHOLE | CMP CORRUGATED METAL PIPE |
| CHAIN LINK FENCE | — o — | ⊕→ UTILITY POLE W/GUY | PVC POLYVINYL CHLORIDE PIPE |
| EDGE OF PAVEMENT | — | ⊕ UTILITY POLE | HDPE HIGH DENSITY POLYETHYLENE PIPE |
| PROPERTY LINE | — | ☆ LIGHTPOST | BIT. BITUMINOUS CONC. |
| ABUTTER LINE | — | ⊕-G.G. GAS GATE | |
| SANITARY SEWER | — S — | ⊕-G.T.B. GAS TEST BOX | |
| STORM DRAIN | — D — | ⊕-W.G. WATER GATE | |
| WATER MAIN | — W — | ⊕ HYDRANT | |
| UNDERGROUND ELECTRIC | — E — | ⊕ SIGN | |
| UNDERGROUND TELEPHONE | — T — | ⊕ MAILBOX | |
| UNDERGROUND TELEVISION | — TV — | ⊕ XC1 CROSS SECTION FLAG (ESTABLISHED BY CLIENT) | |
| GAS LINE | — G — | ⊕ BUSH | |
| OVERHEAD ELECTRIC | — OE — | ⊕ CONIFEROUS TREE | |
| | | ⊕ DECIDUOUS TREE | |

- NOTES:**
- THIS PLAN IS BASED ON A FIELD SURVEY BY THIS OFFICE DATED 11/03/2012 THROUGH 01/21/2022.
 - HORIZONTAL DATUM IS NAD83. VERTICAL DATUM IS NAVD88. BOTH DATUMS WERE ESTABLISHED AT THIS SITE BY GPS METHODS. TEMPORARY VERTICAL BENCHMARKS WERE SET AND ARE AS SHOWN ON THIS PLAN.
 - UTILITIES ARE SHOWN HEREON FROM FIELD LOCATIONS OF SURFACE VISIBLE STRUCTURES AND AVAILABLE RECORD INFORMATION. OTHER UNDERGROUND UTILITIES MAY EXIST. IT SHALL BE THE RESPONSIBILITY OF THE CONTRACTOR TO VERIFY THE LOCATION, SIZE & ELEVATION OF ALL UTILITIES WITHIN THE AREA OF PROPOSED WORK AND TO CONTACT "DIG-SAFE" AT 811 AT LEAST 72 HOURS PRIOR TO ANY EXCAVATION, DEMOLITION OR CONSTRUCTION.
 - PROPERTY LINES SHOWN ARE BASED ON MASS GIS DATA.
 - ABUTTER INFORMATION SHOWN IS BASED ON SOUTH HADLEY'S ASSESSOR'S RECORDS AS SHOWN ON THE TOWNS WEB SITE.



NO.	DATE	BY	REVISIONS

SHERMAN & FRYDRYK
Land Surveying, Engineering & Scientists
A DIVISION OF HANCOCK SURVEY ASSOCIATES, INC.
3 Converse Street, Suite 203
Palmer, MA 01069

FIELD WORK: KRP/ESJ
COMPS: KJM
DRAFTING: KJM
CHECKED: TRF
APPROVED: GGG

SCALE:
HORIZ: 1"=20'
VERT: N/A
DATE: 01/24/2022

PARTIAL EXISTING CONDITIONS
QUEENSVILLE DAM/BUTTERY BROOK

PLAN OF LAND IN SOUTH HADLEY, MA
PREPARED FOR
FUSS & O'NEILL

PROJECT NUMBER
21162
SHEET NUMBER
1 OF 4

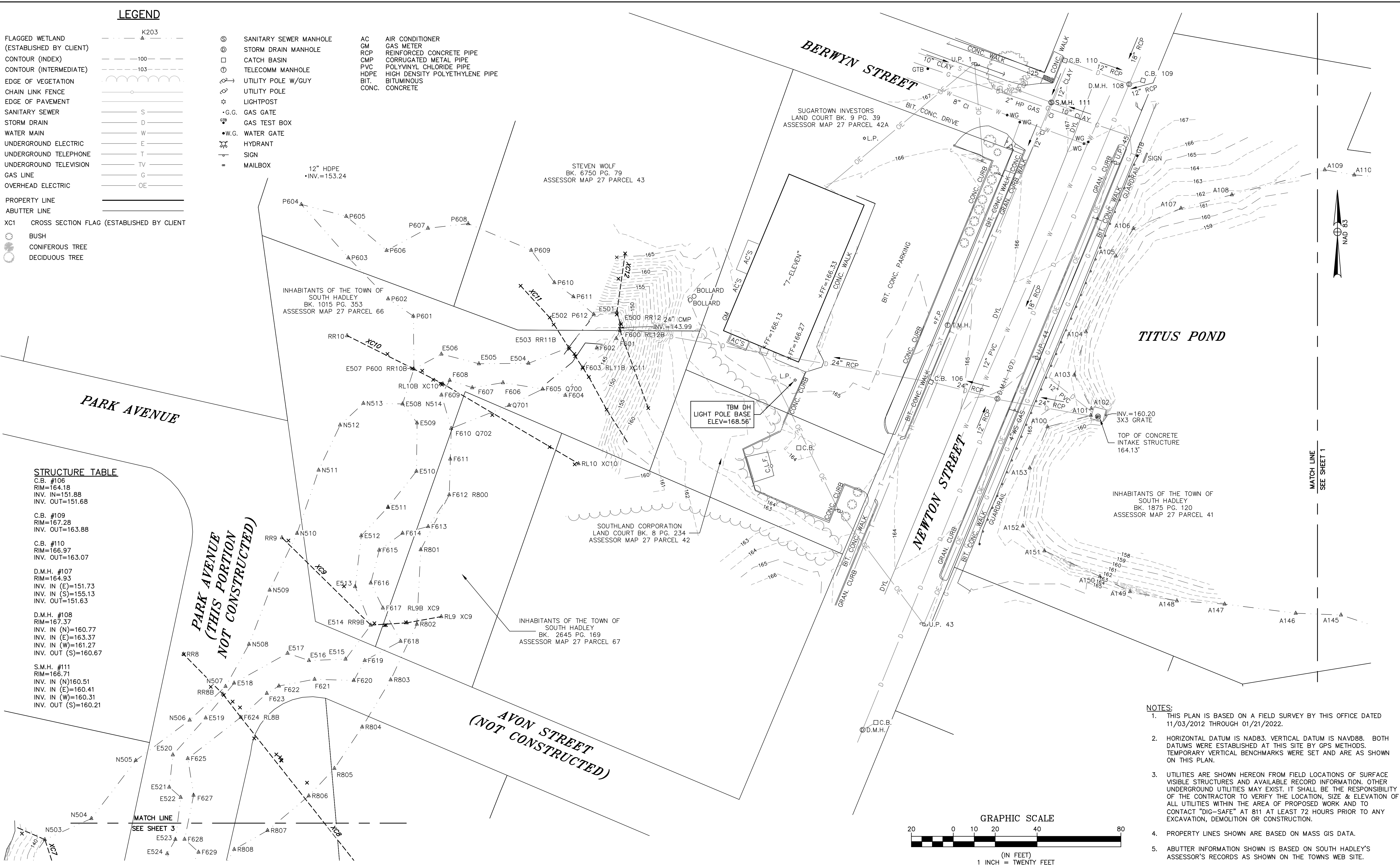
LEGEND

- FLAGGED WETLAND (ESTABLISHED BY CLIENT)
- CONTOUR (INDEX)
- CONTOUR (INTERMEDIATE)
- EDGE OF VEGETATION
- CHAIN LINK FENCE
- EDGE OF PAVEMENT
- SANITARY SEWER
- STORM DRAIN
- WATER MAIN
- UNDERGROUND ELECTRIC
- UNDERGROUND TELEPHONE
- UNDERGROUND TELEVISION
- GAS LINE
- OVERHEAD ELECTRIC
- PROPERTY LINE
- ABUTTER LINE
- XC1 CROSS SECTION FLAG (ESTABLISHED BY CLIENT)
- BUSH
- CONIFEROUS TREE
- DECIDUOUS TREE

- SANITARY SEWER MANHOLE
- STORM DRAIN MANHOLE
- CATCH BASIN
- TELECOMM MANHOLE
- UTILITY POLE W/GUY
- UTILITY POLE
- LIGHTPOST
- GAS GATE
- GAS TEST BOX
- WATER GATE
- HYDRANT
- SIGN
- MAILBOX
- AIR CONDITIONER
- GAS METER
- REINFORCED CONCRETE PIPE
- CORRUGATED METAL PIPE
- POLYVINYL CHLORIDE PIPE
- HIGH DENSITY POLYETHYLENE PIPE
- BITUMINOUS
- CONCRETE

STRUCTURE TABLE

C.B. #108	RIM=164.18	INV. IN=151.88	INV. OUT=151.68
C.B. #109	RIM=167.28	INV. OUT=163.88	
C.B. #110	RIM=166.97	INV. OUT=163.07	
D.M.H. #107	RIM=164.93	INV. IN (E)=151.73	INV. IN (S)=155.13
		INV. OUT=151.63	
D.M.H. #108	RIM=167.37	INV. IN (N)=160.77	INV. IN (E)=163.37
		INV. IN (W)=161.27	INV. OUT (S)=160.67
S.M.H. #111	RIM=166.71	INV. IN (N)=160.51	INV. IN (E)=160.41
		INV. IN (W)=160.31	INV. OUT (S)=160.21

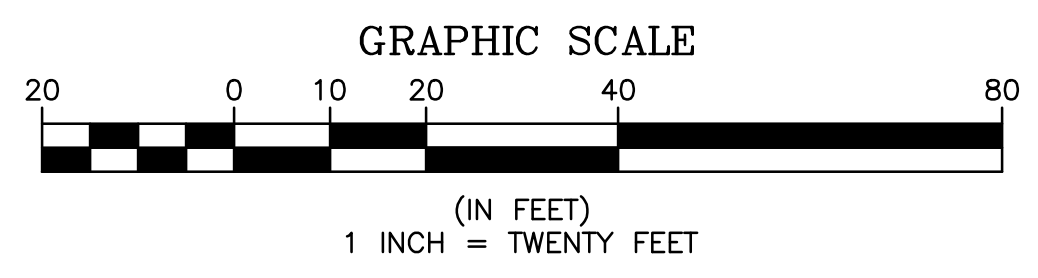


PARK AVENUE (THIS PORTION NOT CONSTRUCTED)

AVON STREET (NOT CONSTRUCTED)

TITUS POND

- NOTES:**
- THIS PLAN IS BASED ON A FIELD SURVEY BY THIS OFFICE DATED 11/03/2012 THROUGH 01/21/2022.
 - HORIZONTAL DATUM IS NAD83. VERTICAL DATUM IS NAVD88. BOTH DATUMS WERE ESTABLISHED AT THIS SITE BY GPS METHODS. TEMPORARY VERTICAL BENCHMARKS WERE SET AND ARE AS SHOWN ON THIS PLAN.
 - UTILITIES ARE SHOWN HEREON FROM FIELD LOCATIONS OF SURFACE VISIBLE STRUCTURES AND AVAILABLE RECORD INFORMATION. OTHER UNDERGROUND UTILITIES MAY EXIST. IT SHALL BE THE RESPONSIBILITY OF THE CONTRACTOR TO VERIFY THE LOCATION, SIZE & ELEVATION OF ALL UTILITIES WITHIN THE AREA OF PROPOSED WORK AND TO CONTACT "DIG-SAFE" AT 811 AT LEAST 72 HOURS PRIOR TO ANY EXCAVATION, DEMOLITION OR CONSTRUCTION.
 - PROPERTY LINES SHOWN ARE BASED ON MASS GIS DATA.
 - ABUTTER INFORMATION SHOWN IS BASED ON SOUTH HADLEY'S ASSESSOR'S RECORDS AS SHOWN ON THE TOWNS WEB SITE.



NO.	DATE	BY	REVISIONS

SHERMAN & FRYDRYK
Land Surveying, Engineering & Scientists
 A DIVISION OF HANCOCK SURVEY ASSOCIATES, INC.
 3 Converse Street, Suite 203
 Palmer, MA 01069



FIELD WORK: KRP/ESJ
 COMPS: KJM
 DRAFTING: KJM
 CHECKED: TRF
 APPROVED: GGG

SCALE:
 HORZ: 1"=20'
 VERT: N/A
 DATE: 01/24/2022

PARTIAL EXISTING CONDITIONS
QUEENSVILLE DAM/BUTTERY BROOK

PLAN OF LAND IN SOUTH HADLEY, MA
 PREPARED FOR
FUSS & O'NEILL

PROJECT NUMBER
 21162
SHEET NUMBER
 2 OF 4

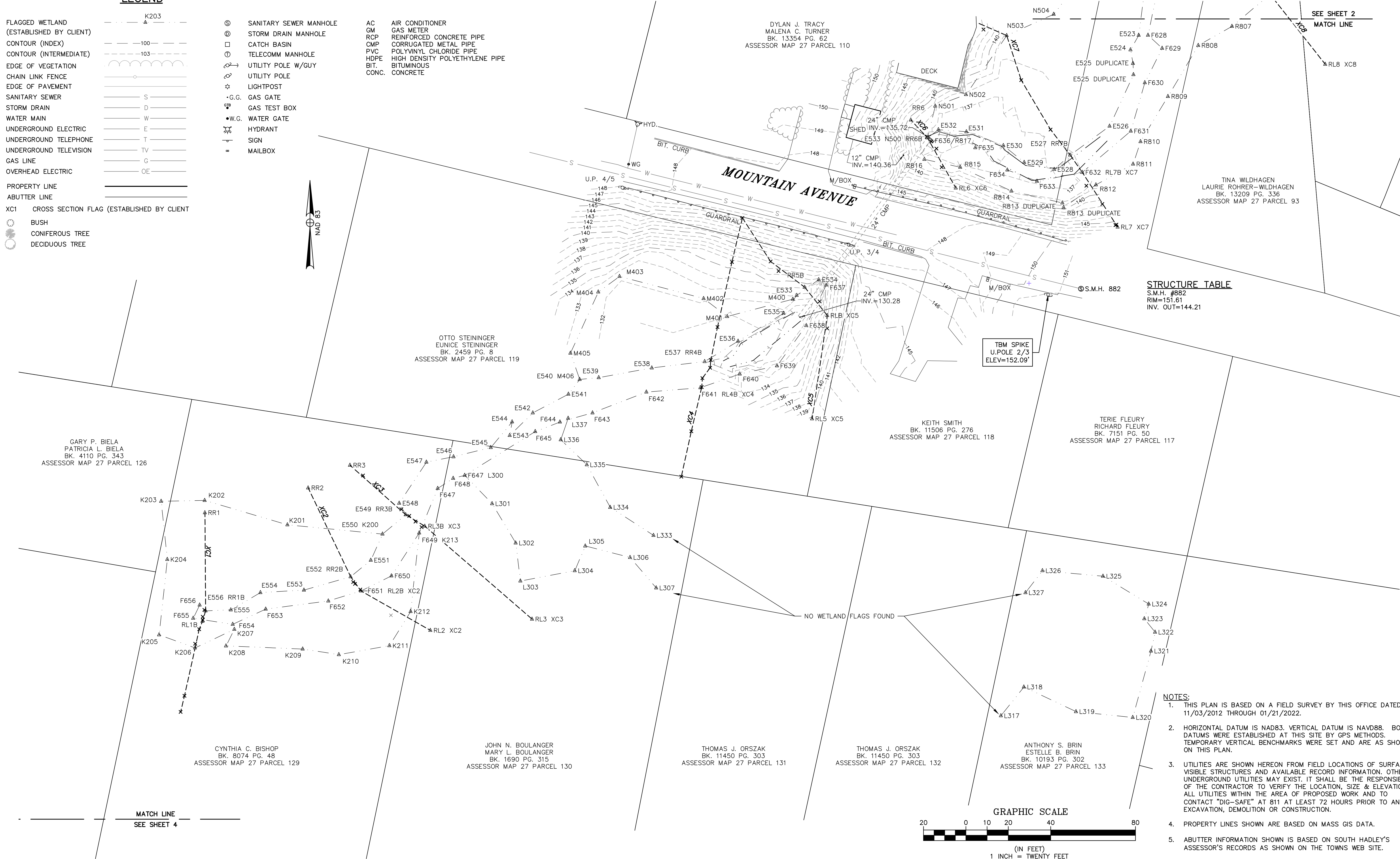
LEGEND

- FLAGGED WETLAND (ESTABLISHED BY CLIENT) K203
- CONTOUR (INDEX) 100
- CONTOUR (INTERMEDIATE) 103
- EDGE OF VEGETATION
- CHAIN LINK FENCE
- EDGE OF PAVEMENT
- SANITARY SEWER S
- STORM DRAIN D
- WATER MAIN W
- UNDERGROUND ELECTRIC E
- UNDERGROUND TELEPHONE T
- UNDERGROUND TELEVISION TV
- GAS LINE G
- OVERHEAD ELECTRIC OE

- ⊙ SANITARY SEWER MANHOLE
- ⊕ STORM DRAIN MANHOLE
- ⊞ CATCH BASIN
- ⊕ TELECOMM MANHOLE
- ⊕ UTILITY POLE W/GUY
- ⊕ UTILITY POLE
- ☆ LIGHTPOST
- +G.G. GAS GATE
- ⊕ GAS TEST BOX
- W.G. WATER GATE
- ⊕ HYDRANT
- ⊕ SIGN
- ⊕ MAILBOX

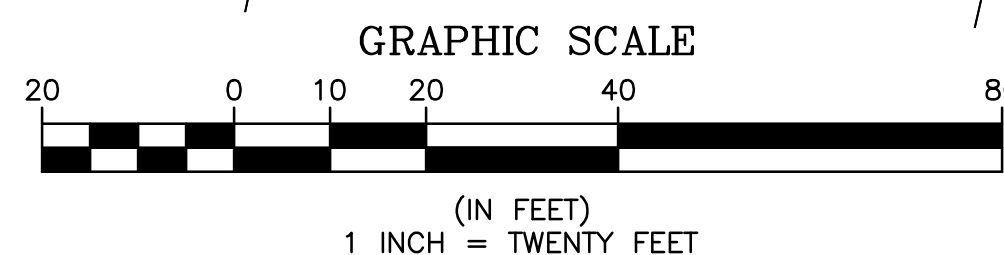
- AC AIR CONDITIONER
- GM GAS METER
- RCP REINFORCED CONCRETE PIPE
- CMP CORRUGATED METAL PIPE
- PVC POLYVINYL CHLORIDE PIPE
- HDPE HIGH DENSITY POLYETHYLENE PIPE
- BIT. BITUMINOUS
- CONC. CONCRETE

- PROPERTY LINE
- ABUTTER LINE
- XC1 CROSS SECTION FLAG (ESTABLISHED BY CLIENT)
- ⊕ BUSH
- ⊕ CONIFEROUS TREE
- ⊕ DECIDUOUS TREE



STRUCTURE TABLE

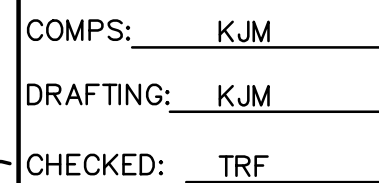
S.M.H. #882
RIM=151.61
INV. OUT=144.21



- NOTES:**
1. THIS PLAN IS BASED ON A FIELD SURVEY BY THIS OFFICE DATED 11/03/2012 THROUGH 01/21/2022.
 2. HORIZONTAL DATUM IS NAD83. VERTICAL DATUM IS NAVD88. BOTH DATUMS WERE ESTABLISHED AT THIS SITE BY GPS METHODS. TEMPORARY VERTICAL BENCHMARKS WERE SET AND ARE AS SHOWN ON THIS PLAN.
 3. UTILITIES ARE SHOWN HEREON FROM FIELD LOCATIONS OF SURFACE VISIBLE STRUCTURES AND AVAILABLE RECORD INFORMATION. OTHER UNDERGROUND UTILITIES MAY EXIST. IT SHALL BE THE RESPONSIBILITY OF THE CONTRACTOR TO VERIFY THE LOCATION, SIZE & ELEVATION OF ALL UTILITIES WITHIN THE AREA OF PROPOSED WORK AND TO CONTACT "DIG-SAFE" AT 811 AT LEAST 72 HOURS PRIOR TO ANY EXCAVATION, DEMOLITION OR CONSTRUCTION.
 4. PROPERTY LINES SHOWN ARE BASED ON MASS GIS DATA.
 5. ABUTTER INFORMATION SHOWN IS BASED ON SOUTH HADLEY'S ASSESSOR'S RECORDS AS SHOWN ON THE TOWNS WEB SITE.

NO.	DATE	BY	REVISIONS

SHERMAN & FRYDRYK
Land Surveying, Engineering & Scientists
 A DIVISION OF HANCOCK SURVEY ASSOCIATES, INC.
 3 Converse Street, Suite 203
 Palmer, MA 01069



FIELD WORK: KRP/ESJ
 COMPS: KJM
 DRAFTING: KJM
 CHECKED: TRF
 APPROVED: GGG

SCALE:
 HORZ: 1"=20'
 VERT: N/A
 DATE: 01/24/2022

PARTIAL EXISTING CONDITIONS
QUEENSVILLE DAM/BUTTERY BROOK

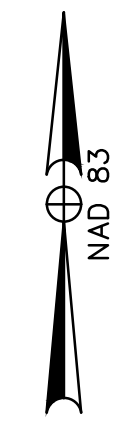
PLAN OF LAND IN SOUTH HADLEY, MA
 PREPARED FOR
FUSS & O'NEILL

PROJECT NUMBER
21162
SHEET NUMBER
3 OF 4

LEGEND

- FLAGGED WETLAND (ESTABLISHED BY CLIENT)
- CONTOUR (INDEX)
- CONTOUR (INTERMEDIATE)
- EDGE OF VEGETATION
- CHAIN LINK FENCE
- EDGE OF PAVEMENT
- SANITARY SEWER
- STORM DRAIN
- WATER MAIN
- UNDERGROUND ELECTRIC
- UNDERGROUND TELEPHONE
- UNDERGROUND TELEVISION
- GAS LINE
- OVERHEAD ELECTRIC
- PROPERTY LINE
- ABUTTER LINE
- XC1 CROSS SECTION FLAG (ESTABLISHED BY CLIENT)
- BUSH
- CONIFEROUS TREE
- DECIDUOUS TREE

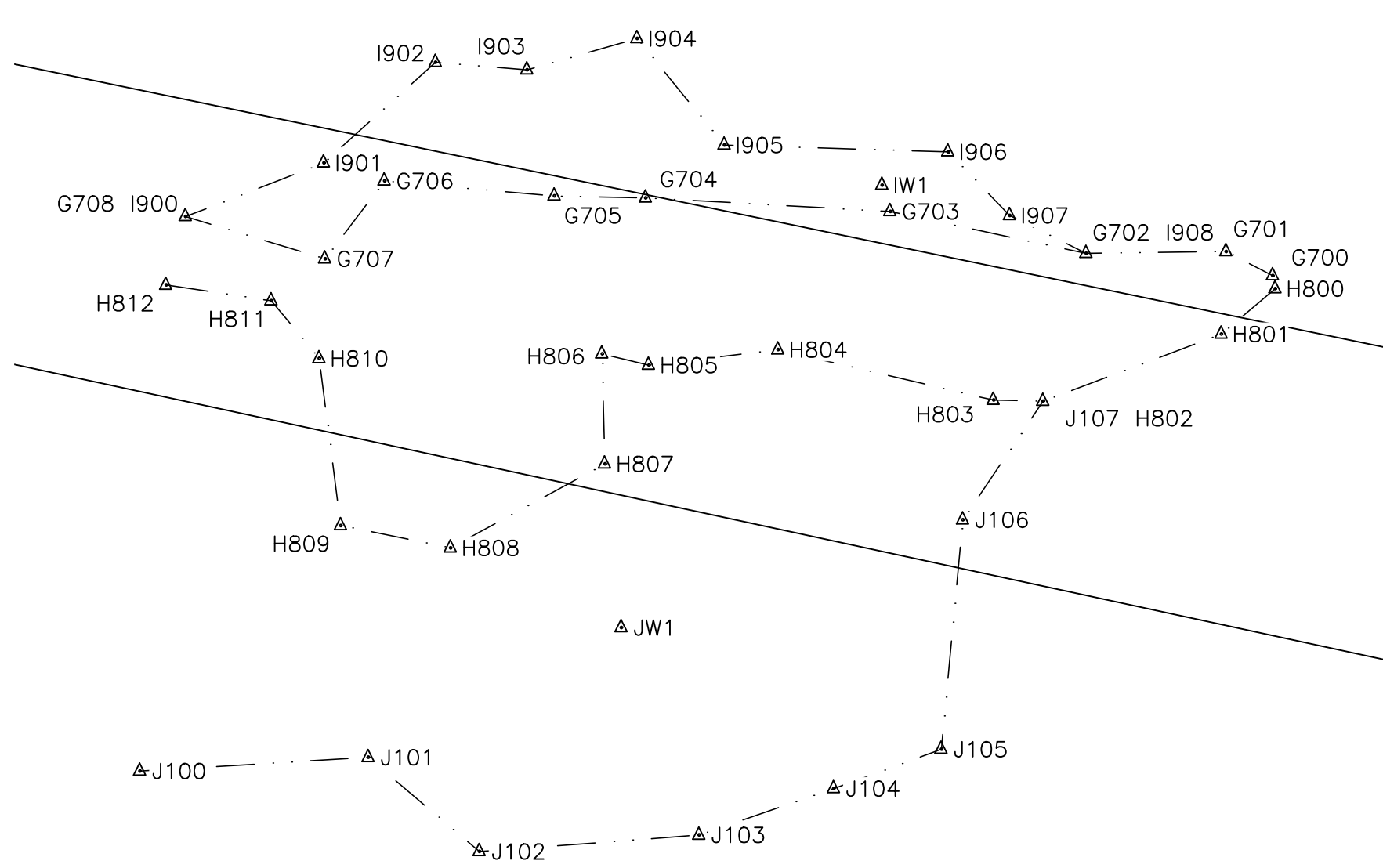
- ⊙ SANITARY SEWER MANHOLE
- ⊕ STORM DRAIN MANHOLE
- CATCH BASIN
- ⊕ TELECOMM MANHOLE
- ↗ UTILITY POLE W/GUY
- ↘ UTILITY POLE
- ☆ LIGHTPOST
- G.G. GAS GATE
- ⊕ GAS TEST BOX
- W.G. WATER GATE
- ⊕ HYDRANT
- ⊕ SIGN
- ⊕ MAILBOX
- AC AIR CONDITIONER
- GM GAS METER
- RCP REINFORCED CONCRETE PIPE
- CMP CORRUGATED METAL PIPE
- PVC POLYVINYL CHLORIDE PIPE
- HDPE HIGH DENSITY POLYETHYLENE PIPE
- BIT. BITUMINOUS
- CONC. CONCRETE



SEE SHEET 3
MATCH LINE

DAVID WOJNAROWSKI
SHERYL WOJNAROWSKI
BK. 9466 PG. 75
ASSESSOR MAP 25 PARCEL 55

DAVID B. WILLIAMS
AMY M. WILLIAMS
BK. 10710 PG. 339
ASSESSOR MAP 25 PARCEL 64

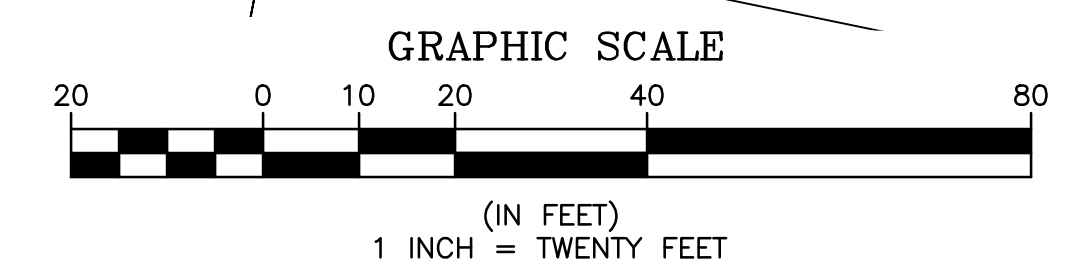


HAIG AVENUE
(NOT CONSTRUCTED)

HAIG AVENUE

VIVIANNI STREET
(NOT CONSTRUCTED)

TBM SPINDLE
HYDRANT
ELEV=130.04'



- NOTES:
1. THIS PLAN IS BASED ON A FIELD SURVEY BY THIS OFFICE DATED 11/03/2012 THROUGH 01/21/2022.
 2. HORIZONTAL DATUM IS NAD83. VERTICAL DATUM IS NAVD88. BOTH DATUMS WERE ESTABLISHED AT THIS SITE BY GPS METHODS. TEMPORARY VERTICAL BENCHMARKS WERE SET AND ARE AS SHOWN ON THIS PLAN.
 3. UTILITIES ARE SHOWN HEREON FROM FIELD LOCATIONS OF SURFACE VISIBLE STRUCTURES AND AVAILABLE RECORD INFORMATION. OTHER UNDERGROUND UTILITIES MAY EXIST. IT SHALL BE THE RESPONSIBILITY OF THE CONTRACTOR TO VERIFY THE LOCATION, SIZE & DEPTH OF ALL UTILITIES WITHIN THE AREA OF PROPOSED WORK AND TO CONTACT "DIG-SAFE" AT 811 AT LEAST 72 HOURS PRIOR TO ANY EXCAVATION, DEMOLITION OR CONSTRUCTION.
 4. PROPERTY LINES SHOWN ARE BASED ON MASS GIS DATA.
 5. ABUTTER INFORMATION SHOWN IS BASED ON SOUTH HADLEY'S ASSESSOR'S RECORDS AS SHOWN ON THE TOWNS WEB SITE.

NO.	DATE	BY	REVISIONS

SHERMAN & FRYDRYK
Land Surveying, Engineering & Scientists
 A DIVISION OF HANCOCK SURVEY ASSOCIATES, INC.
 3 Converse Street, Suite 203
 Palmer, MA 01069

FIELD WORK: KRP/ESJ
 COMPS: KJM
 DRAFTING: KJM
 CHECKED: TRF
 APPROVED: GGG

SCALE:
 HORZ: 1"=20'
 VERT: N/A
 DATE: 01/24/2022

PARTIAL EXISTING CONDITIONS
 QUEENSVILLE DAM/BUTTERY BROOK

PLAN OF LAND IN
 SOUTH HADLEY, MA
 PREPARED FOR
 FUSS & O'NEILL

PROJECT NUMBER
 21162
 SHEET NUMBER
 4 OF 4